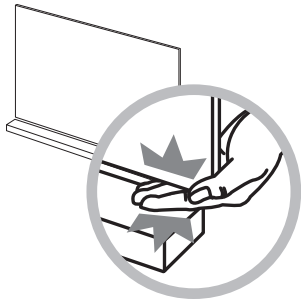
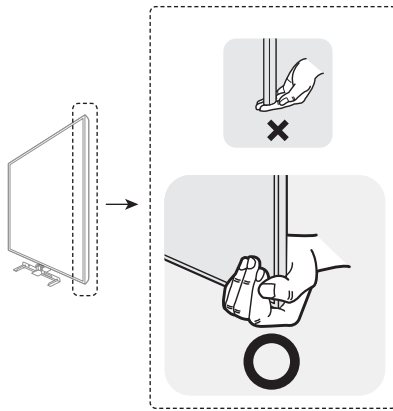


CAUTION for moving a TV

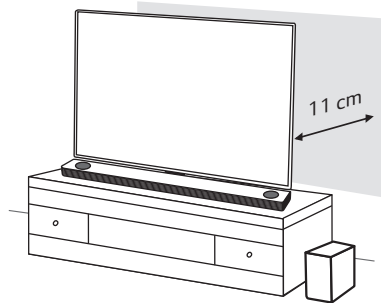


! Be sure to remove the Sound Bar when moving the TV.

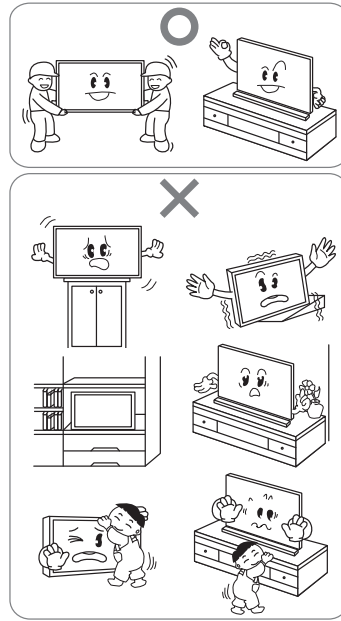


Positioning

For safety installation, there should be enough space between the wall and the installed product.

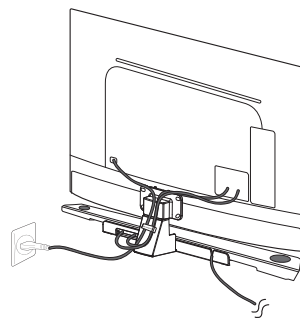
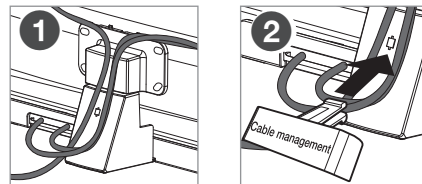


CAUTION



Cable management

You can arrange the cables behind of your TV by using a supplied cable management clip.

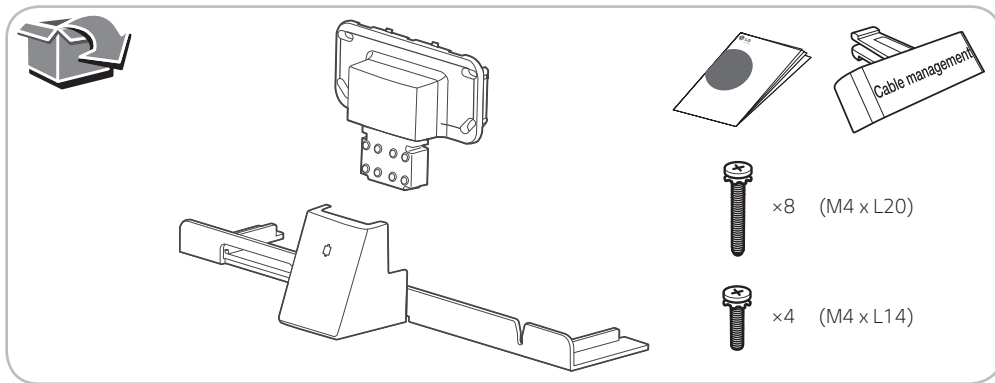


LG TV Stand Installation Guide for Sound Bar (SK10Y)

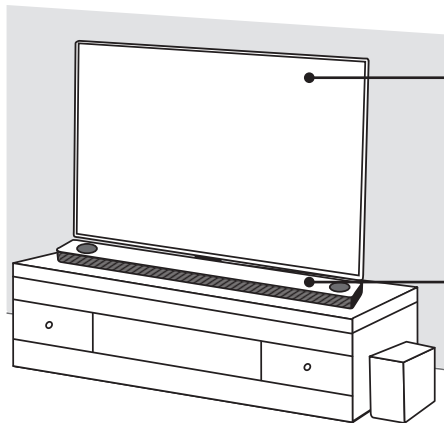
MODEL
TK10



www.lg.com
Copyright © 2018 LG Electronics Inc. All Rights Reserved.



CHECK

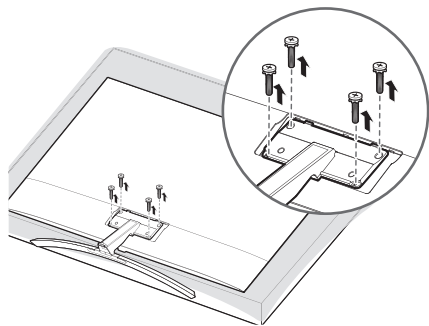


LG TV (Compatible TV models)

- OLED65/55C8
- OLED65/55B8
- 65/55SK95
- 65/55SK85

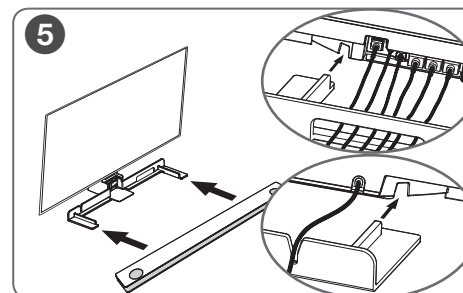
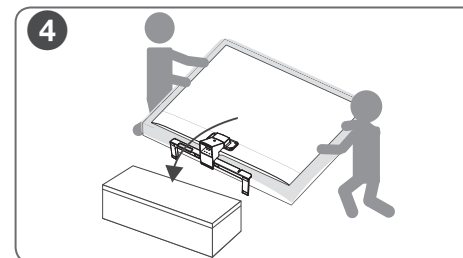
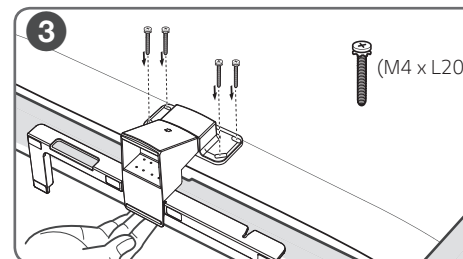
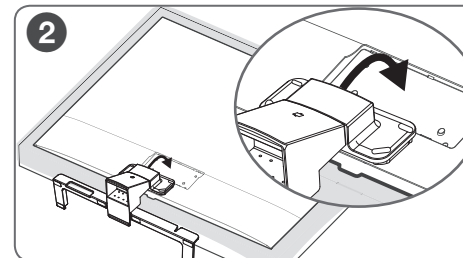
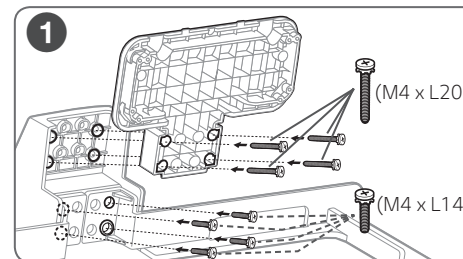
LG Sound Bar
SK10Y

⚠ Before installation, you have to detach TV's stand and retain it separately if your TV has been installed with the stand. When you are detaching the stand, please refer to the instruction manual of your TV.



- ⚠ When detaching or attaching the stand of the TV, place the screen facing down on a cushioned table or flat surface to protect the screen from scratches and damages.
- Make sure that the screws are fastened tightly. (If they are not fastened securely enough, the TV may tilt forward after being installed.)
- After arranging the cables, install the sound bar.

Installation (SK95/SK85)



Installation (C8/B8)

