



SIMPLE MANUAL

# Mini Hi-Fi System

ENGLISH

Please read this manual carefully before operating your set and retain it for future reference.

To view the instructions of advanced features, visit  
<http://www.lg.com> and then download Owner's Manual.  
Some of the content in this manual may differ from your unit.

MODEL

CL98



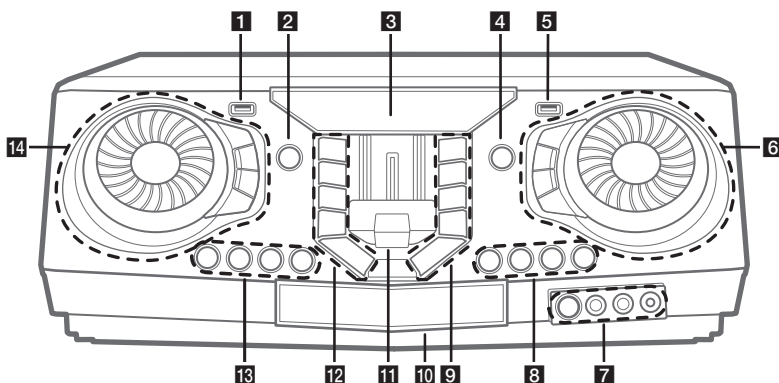
MFL71261063  
1906\_Rev01

[www.lg.com](http://www.lg.com)

Copyright © 2019-2021 LG Electronics Inc. All Rights Reserved.



## Front Panel



### 1 USB 1 Port

You can play sound files by connecting the USB device.

### 2 (Standby)

Turns the power on or off.

### 3 Display window

### 4 F (Function)

Selects the function and input source.

### 5 USB 2 Port

You can play sound files by connecting the USB device.

### 6 MASTER VOLUME

- Adjusts speaker volume.
- Selects the lighting effects.
- Selects vocal effects.

#### LIGHTING

Selects the lighting mode.

#### MIC VOL (Microphone volume) -/+

Adjusts microphone volume.

#### MIC (Microphone) ECHO

Selects ECHO mode.

### 7 (Remote sensor)

MIC (Microphone) 1/2 jack

AUX IN 1 jack

### 8 KEY CHANGER (#/b)

Changes the key to suit your vocal range.

#### VOICE CANCELLER

You can reduce the vocal tones during music playback from various input sources.

#### VOCAL EFFECTS

Selects various vocal effects mode.

### 9 TWIN

Connects two speakers for TWIN mode in WIRELESS PARTY LINK.

#### DJ LOOP

Selects DJ LOOP mode.

(DJ LOOP mode can use during CD/USB playback.)

#### (Play/Pause)

- Starts or pauses playback.
- Selects stereo/mono.

#### (Skip/Search)

- Skips forward.
- Searches for a section within a track/file.
- Selects the radio stations.

#### PARTY ACCELERATOR MODE

Selects PARTY ACCELERATOR MODE.

### 10 Disc tray

### 11 PARTY ACCELERATOR lever

Slide the lever to create a party atmosphere.

## 12 DEMO

In power off status, if you press **DEMO**, show DEMO mode.

### SPECIAL EQ / BASS BLAST (or BASS BLAST+)

- Chooses special equalizer.
- Press and hold to select BASS (or BASS+) effect directly.

□ (Stop)

Stops playback or cancels DELETE function.

⏮ (Skip/Search)

- Skips backward.
- Searches for a section within a track/file.
- Selects the radio stations.

△ (Open/Close)

Opens and closes the disc tray.

## 13 CLUB, DRUM, USER (DJ PAD)

Selects CLUB, DRUM or USER sound effect to mix.

(If you want to use USER, you have to register a source with "LG XBOOM" app.)

1, 2, 3, 4 (DJ PAD)

Press a desired sound pad.

## 14 DJ SCRATCHER / LEVEL CONTROL & SEARCH

- Turns clockwise or counterclockwise to make scratch sound.
- Turns clockwise or counterclockwise to control the USER EQ level.
- Searches a folder or a file.
- Adjust DJ EFFECT level.

### DJ EFFECT

Selects a desired DJ EFFECT.

### SEARCH

Moves to folder or file in selection mode.

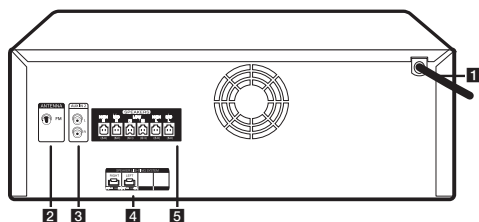
### OK

Selects a folder when searching a file.

### USER EQ

Selects the equalizer created by your own.

## Rear Panel



1 Power cord

2 ANTENNA (FM)

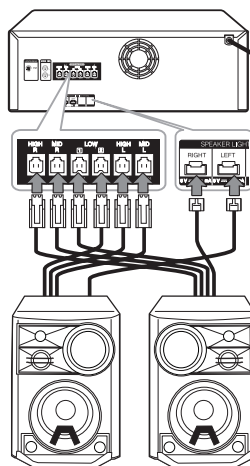
3 AUX IN 2 (L/R)

4 SPEAKER LIGHTING SYSTEM

Connect the speaker lighting cables.

5 SPEAKERS connector

## Speaker Connection



## Controller App



Download the **LG XBOOM** App to your device.  
(Android only)


## LG Sound Sync (Wireless)



For more information, download the online owner's manual. <http://www.lg.com>

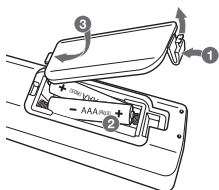
## Additional Information

### Specifications

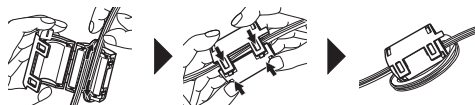
Power Requirements	Refer to the main label on the unit.
Power Consumption	Refer to the main label on the unit. Networked standby : 0.5 W (If all network ports are activated.)
Dimensions (W x H x D)	Approx. 450.0 mm x 167.0 mm x 332.0 mm
Bus Power Supply (USB)	5 V  500 mA
Amplifier (Total RMS output power)	3,500 W RMS

Design and specifications are subject to change without notice.

### Replacement of battery



### About Ferrite Core (Optional)



Wind power cord cable around the ferrite core twice.

### Caution

- When you use the multiple socket, it is advisable to use 15 A socket. 10 A socket may cause power off due to lack of power supply.
- Do not place objects on the speakers. It may cause the objects to fall and make property damage.
- Install the speakers on a firm surface not to slide. The vibration caused by the strong output can shake and move the speakers.
- Avoid turning up max volume in a small enclosed space. The powerful and intense output of the speakers can shake the ceiling and get the objects in the room falling.

- To protect from hearing damage, keep the sufficient distance from the speaker. The overwhelming sound from the speaker may cause a person's hearing damage.
- Allow more than 20 cm of free space between the main set and the speakers when you install the main set on the ground. High sound pressure from the speakers can make the set vibrate which can disturb the CD playback.
- Connect the power cord to wall outlet directly if possible. Or when you use an extension cable, it is highly recommended to use an extension cable of 110 V / 15 A or 230 V / 15 A, otherwise the unit may not operate properly because of the lack of power supply.
- Do not overload the extension cord with excessive electrical load.

### Note

- Do not look directly at the light emitting part when the LIGHTING is turned on.
- If the illumination brightness is glaring, switch on the room lights or turn off the LIGHTING of the unit.

### How to disconnect the wireless network connection or the wireless device

Turn off the unit by pressing the power button for more than 5 seconds.

### Declaration of Conformity



Hereby, LG Electronics declares that the radio equipment type Mini Hi-Fi System is in compliance with Directive 2014/53/EU. The full text of the EU declaration of conformity is available at the following internet address:

<http://www.lg.com/global/support/cedoc/cedoc#>

For consideration of the user, this device should be installed and operated with a minimum distance of 20 cm between the device and the body.



-----

-----

-----

-----

-----

-----

-----

-----

-----

-----



#### **Российская Федерация**

Импортер ООО "ЛГ Электроникс Рус"

Адрес импортера: 143160, Российская Федерация, Московская область, Рузский городской округ, территория  
Минское шоссе, километр 86-й, дом 9

Адрес производителя : ЛГ Электроникс (Хужоу) Инк., завод Хатаи  
516006, Китай, пров. Гуандонг, г. Хужоу, Промышленная зона  
Жонгкай, Индустриальный парк Хутай, ХуФенг Донг Уи Роуд, 13.

**Сделано в Китае**

#### **Україна**

Вироблено в: ЛГ Електронікс (Хужоу) Інк., завод Хатай  
516006, Китай, пров. Гуандонг, м. Хужоу, Промислова зона Жонгкай,  
Індустріальний парк Хутай, ХуФенг Донг Уі Роуд, 13.

#### **Қазақстан Республикасы**

Импорттаушы АҚ "ЭЛ Джи Электроникс Алматы Қазақстан", 050061, Алматы қ., Көкорай көшесі, 2А/9

Өндірушінің мекенжайы: LG Electronics(Huizhou) Inc. Huitai Factory  
516006, Қытай, Гуандонг ауданы, Хужоу қаласы, Жонгкай өнеркәсіптік аймағы,  
Хутай Индустриялық саябағы, ХуФенг Донг Уи Роуд, 13.

Қазақстан Республикасы территориясында тұтынушылардан келіп түскен талаптар мен ұсыныстарды  
қарайтын және тауарды жөндеу мен техникалық қызмет көрсететін ұжым:

АҚ «Эл Джи Электроникс Алматы Қазақстан», 050061, Қазақстан Республикасы, Алматы қ., Көкорай көшесі,  
2А/9. Басқа сервис орталықтары жайында мағлұматты "Тұтынушыға қызмет көрсету орталығына" телефон  
шалу арқылы білуге болады.

**Қытайда жасалған**