

SIMPLE MANUAL

DVD Home Theater System

To view the instructions of advanced features,
visit <http://www.lg.com> and then download Owner's Manual.
Some of the content in this manual may differ from your unit.

MODEL
LHD655



www.lg.com



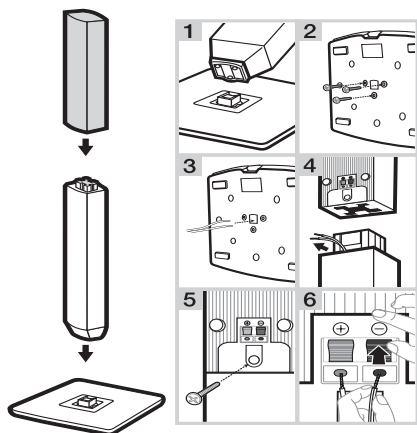
Front Panel



MIC 1/2 Connect a microphone.
PORT. IN Connect to a Portable device.
USB Port Connect a USB device.
△ Disc Tray Open / Close
>II Starts / Pauses playback.
□ Stops playback.
F Changes the input source or function.
- / + Adjusts volume.
⏻ / I Power On / Off

1

Speaker Assembling



Rear Panel

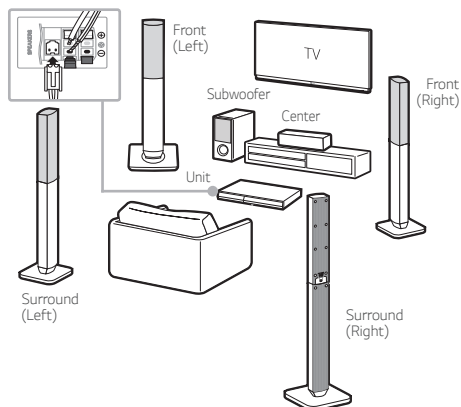


SPEAKERS Connect to speakers.
HDMI OUT TO TV Connect to TV.
AUX (L/R) INPUT Connect to analogue device.
VIDEO OUT Connect to TV.
OPTICAL IN Connect to digital device.
ANTENNA FM Connect to radio antenna.

2

Speaker Connection

! Speaker design and connection method may be different according to models.

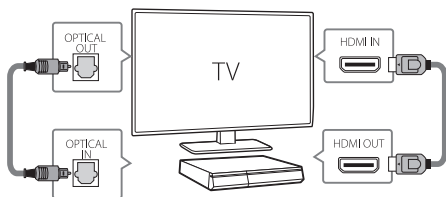


3

TV Connection

HDMI & Optical Connection

- 1 Connect the Player to the TV using HDMI & Optical cable.
- 2 Set the input selector to HDMI on the TV.
- 3 Set up [External Speaker (Optical)] on your TV setting menu.
- 4 Follow the instructions on the TV screen using remote control.



4

Home Menu

Home menu appears on the TV screen. Enjoy various functions on the player.




LG Sound Sync (Wireless)



For more information, download the online owner's manual. <http://www.lg.com>

Additional Information

Specification

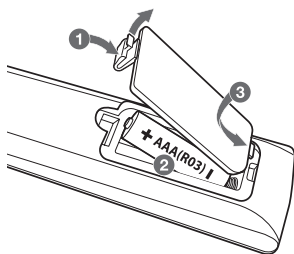
Power requirements	Refer to main label.
Power consumption	Refer to main label. Networked standby : 0.4 W (If all network ports are activated.)
Dimensions (W x H x D)	Approx. 360 mm x 60.5 mm x 299 mm
Net Weight	Approx. 2.69 kg
Bus Power Supply (USB)	5 V  500 mA
Amplifier (Total RMS output power)	1,000 W

Design and specifications are subject to change without notice.

How to disconnect the wireless network connection or the wireless device

Turn off the unit by pressing the power button for more than 5 seconds.

Replacement of battery



Disposal of your appliance



The symbol indicating separate collection for electrical and electronic equipment consists of the crossed-out wheeled bin.

Contact office for compliance of this product:

LG Electronics (Levant) - Jordan
Abdali Project, Rafik Al-Hariri Avenue, The Boulevard,
Central Square, 5th Floor