

SIMPLE MANUAL

# Micro Hi-Fi Audio

ENGLISH

MAGYAR

ČESKY

HRVATSKI

SRPSKI

SLOVENČINA

БЪЛГАРСКИ

МАКЕДОНСКИ

POLSKI

ROMÂNĂ

РУССКИЙ

LATVIEŠU

LIETUVIŲ K.

EESTI

To view the instructions of advanced features,  
visit <http://www.lg.com> and then download Owner's Manual.  
Some of the content in this manual may differ from your unit.

MODEL  
CM1560

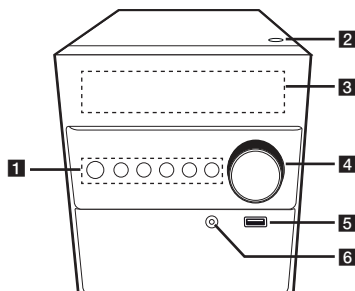


[www.lg.com](http://www.lg.com)

Copyright © 2017 LG Electronics. All Rights Reserved

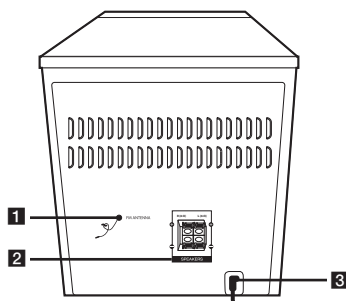


## Front Panel



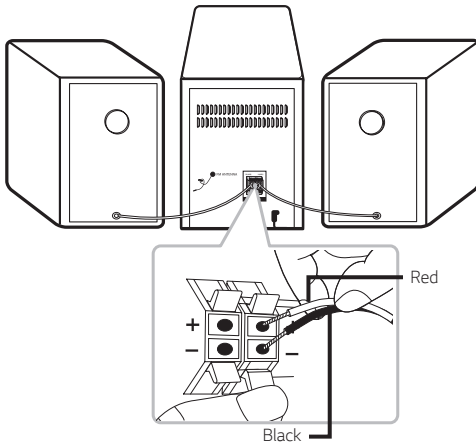
- 1** (Standby/On)  
Switches the unit ON or OFF.  
**F** (Function)  
Selects the function or input source.  
**I<</>>I** (Skip/Search)  
- Searches backward or forward.  
- Skips to the previous/next track/file.  
**TUNING - / +**  
Selects the radio stations.  
**>||** (Play/Pause)  
- Starts or pauses playback.  
- Selects Stereo/Mono.  
 (Stop)  
Stops playback.
- 2** (Open)  
Uses it when inserting or removing a CD.
- 3** Display window
- 4** Volume Knob  
Adjusts volume of speaker.
- 5** USB  
Plays the audio files by connecting the USB device.
- 6** **PORT.** (Portable) **IN**  
Connects to a Portable device.

## Rear Panel



- 1** FM ANTENNA
- 2** SPEAKERS (L/R) terminals
- 3** POWER IN

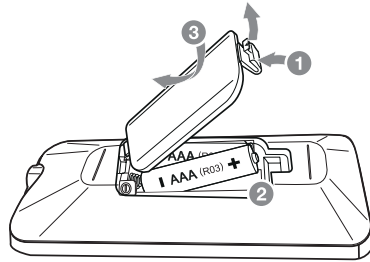
## Speaker Connection



## How to disconnect the wireless network connection or the wireless device

Turn off the unit by pressing the power button for more than 5 seconds.

## Replacement of battery



## Declaration of Conformity



Hereby, LG Electronics declares that the radio equipment type MICRO HI-FI SYSTEM is in compliance with Directive 2014/53/EU. The full text of the EU declaration of conformity is available at the following internet address:


<http://www.lg.com/global/support/cedoc/cedoc#>

For consideration of the user, this device should be installed and operated with a minimum distance of 20 cm between the device and the body.

Frequency range	Output power (Max.)
2402 to 2480 MHz	10 dBm

## Specifications

### Specifications

Power Requirements	Refer to the main label on the unit.
Power Consumption	Refer to the main label on the unit. Networked standby : 0.5 W (If all network ports are activated.)
Dimensions (W x H x D)	Approx. 150 mm x 181 mm x 210 mm
Net Weight	Approx. 1.24 kg
Bus Power Supply (USB)	5 V  500 mA
Amplifier (Total RMS Output power)	10 W

Design and specifications are subject to change without notice.

