


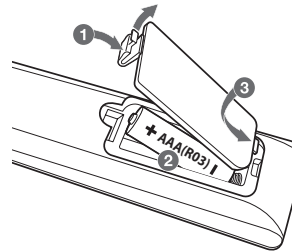
**Additional Information**

**Specification**

Power requirements	Refer to main label.
Power consumption	Refer to main label. Networked standby : 0.4 W (If all network ports are activated.)
Dimensions (W x H x D)	Approx. 360 mm x 60.5 mm x 299 mm
Net Weight	Approx. 2.69 kg
Bus Power Supply (USB)	5 V  500 mA
Amplifier (Total RMS output power)	1,000 W

Design and specifications are subject to change without notice.

**Replacement of battery**



SIMPLE MANUAL  
DVD Home Theater System

To view the instructions of advanced features, visit <http://www.lg.com> and then download Owner's Manual. Some of the content in this manual may differ from your unit.

MODEL  
LHD625





## Front Panel



- PORT. IN..... Connect to a Portable device.
- USB Port..... Connect a USB device.
- △..... Disc Tray Open / Close
- ▶||..... Starts / Pauses playback.
- ..... Stops playback.
- F..... Changes the input source or function.
- / +..... Adjusts volume.
- ⏻ / ⏻..... Power On / Off

## Rear Panel



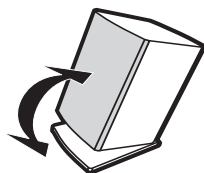
- SPEAKERS ..... Connect to speakers.
- HDMI OUT TO TV ..... Connect to TV.
- AUX (L/R) INPUT ..... Connect to analogue device.
- VIDEO OUT ..... Connect to TV.
- OPTICAL IN..... Connect to digital device.
- ANTENNA FM..... Connect to radio antenna.

## 1 Speaker installation

You can use the speaker in Stand type (A) by adjusting the angle or Wall type (B) by mounting the speaker to a wall.

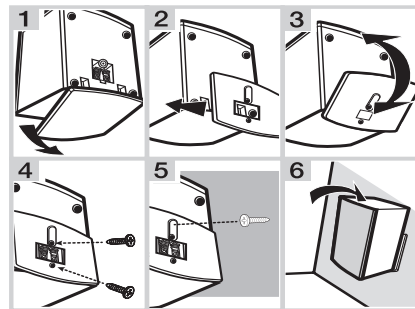
### A Stand type

You can adjust angle of speaker.



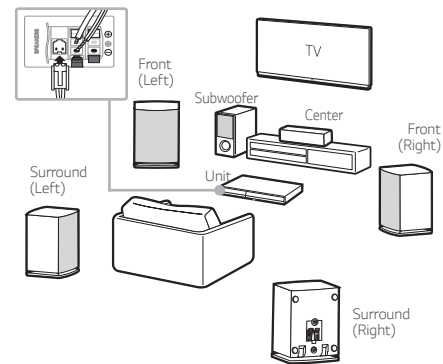
### B Wall type (Mounting the speakers to a Wall)

When you want to mount the speaker to a wall, please refer to below.



## 2 Speaker Connection

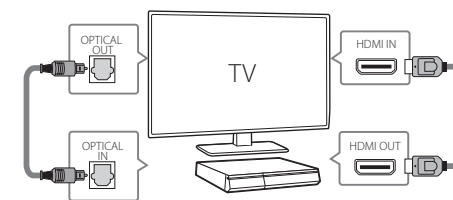
! Speaker design and connection method may be different according to models.



## 3 TV Connection

### HDMI & Optical Connection

- 1 Connect the Player to the TV using HDMI & Optical cable.
- 2 Set the input selector to HDMI on the TV.
- 3 Set up [External Speaker (Optical)] on your TV setting menu.
- 4 Follow the instructions on the TV screen using remote control.



## 4 Home Menu

Home menu appears on the TV screen. Enjoy various functions on the player.



For more information, download the online owner's manual. <http://www.lg.com>