

LG Home Cinema Soundbar

Wi-Fi Soundbar

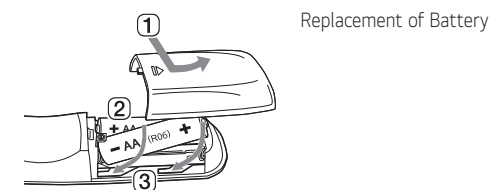
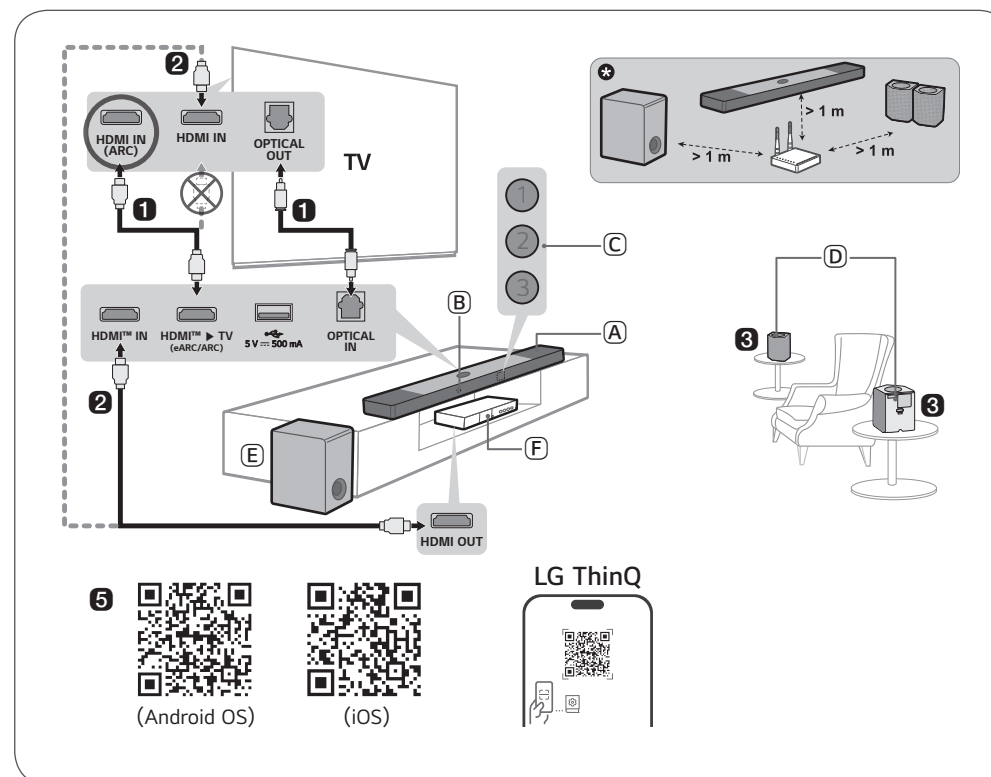
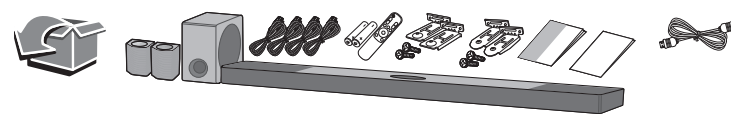
Simple Manual

S95AR (SPT9-SL, SPT9-SR)



MFL05806730
2503_Rev01

www.lg.com
Copyright © 2026 LG Electronics Inc.
All Rights Reserved.



HDMI™
HIGH-DEFINITION MULTIMEDIA INTERFACE

ENGLISH Installing and Using the Product

Please read this manual carefully before operating your set and retain it for future reference. To view the instructions of advanced features, visit <http://www.lg.com> or scan QR code and then download Owner's Manual. Some of the content in this manual may differ from your product.



- (A) Soundbar
- (B) Remote Control Receiver
- (C) Status LED (1)(2)(3)
- (D) Wireless Rear Speakers
- (E) Wireless Subwoofer - Install it close to the soundbar.
- (F) External Device - (Blu-ray player, game console, etc.)

○ : On / ● : Off / ◉ : Blink

Red blinking	White	White blinking	White	White blinking	White	Golden yellow	Purple
Power on Power off	OPTICAL / HDMI ARC	Bluetooth ready	Bluetooth	Wi-Fi ready	Wi-Fi	HDMI IN	USB

- 1 Connect the soundbar to your TV via an optical cable or an HDMI cable.**
- 2** If you are using an external device (ex. Set-top box, Blu-ray player, game console, etc.), connect it to the soundbar or to the TV via an HDMI cable.
 - ⓘ If necessary, purchase HDMI cables, an optical cable, or a USB extension cable to connect the soundbar.
- 3** Connect to power in the following order: wireless subwoofer → wireless rear speakers → soundbar. Then, turn on the soundbar. When the connection is automatically established with the soundbar, the LEDs on the wireless subwoofer and wireless rear speakers will light up green.
 - ⓘ If you have an LG TV that supports the WOWCAST built-in function, you can connect it to the soundbar wirelessly.
- 4 Using the product with your TV**
 - ⓘ Press the **Function** (⏏) button repeatedly until LED1 lights up white. If you are using an external device that is connected to **HDMI™ IN** on the soundbar, press the **Function** (⏏) button repeatedly until LED1 lights up golden yellow.
 - ⓘ On your TV's settings, set the output speaker to [HDMI ARC], [Optical], [LG WOWCAST], or [External Speaker].
 - ⓘ If you have an LG TV that supports the WOWCAST built-in function, you can connect it to the soundbar wirelessly.
- 5 Connecting the product to your smartphone via Wi-Fi**
 - ⓘ Connect your smartphone to Wi-Fi.
 - ⓘ Install the **LG ThinQ** app on Google Play or the App Store.
 - ⓘ Run the **LG ThinQ** app and follow the instructions.
 - ⓘ The product will connect to your smartphone and you can control the product with **LG ThinQ** app.
- 6 Connecting the product to your smartphone via Bluetooth**
 - ⓘ Tap the **Settings** (⚙) button on your smartphone and select **Bluetooth**. Turn on the **Bluetooth** function. (Off > On)
 - ⓘ Press the **Bluetooth pair** (🔗) button. After a moment, LED1 and LED2 blink white.
 - ⓘ Find and select "LG_Speaker_S95AR_XXXX".
 - ⓘ When the product is connected to your smartphone via **Bluetooth**, LED1 and LED2 light up white.

ENGLISH



If you see a red LED on the wireless subwoofer or wireless rear speakers, it means that the soundbar is not connected to the speakers. If this is the case, connect them in the following order.

- ① Press the **Power** (⏻) button on the soundbar to turn it off.
 - ② Press the **PAIRING** button on the back of the wireless subwoofer or wireless rear speakers. Check if each LED blinks green.
 - If you still see a red LED on the wireless subwoofer or wireless rear speakers, press and hold the button on the back of the subwoofer or wireless rear speakers again.
 - ③ Press the **Power** (⏻) button on the soundbar to turn it on.
 - ④ When the connection is established, you will see a green LED light on the wireless subwoofer or wireless rear speakers light up in green.
- ✳ Keep the soundbar, the subwoofer and wireless rear speakers away from the device (ex. wireless router, microwave oven, etc.) over 1 m to prevent wireless interference.
 - Some speakers may not make sound depend on the input source. Select BASS BLAST (BASS BLAST+) sound mode to listen through all speakers.

- Design and specifications are subject to change without notice.
- Google Play is a trademark of Google LLC.

Specification

Power requirements

- Refer to the main label.

Power consumption

- Refer to the main label.

Soundbar dimensions (W x H x D): Approx. 1250.0 mm x

63.0 mm x 135.0 mm

Wireless rear speakers dimensions (W x H x D): Approx.

159.0 mm x 223.0 mm x 142.0 mm

Bus Power Supply (USB): 5 V  500 mA


Amplifier (Total RMS Output power): 810 W RMS

Open Source Software Notice Information

To obtain the source code that is contained in this product, under GPL, LGPL, MPL, and other open source licenses that have the obligation to disclose source code, and to access all referred license terms, copyright notices, please visit <https://opensource.lge.com>. LG Electronics will also provide open source code to you for a charge covering the cost of performing such distribution upon email request to opensource@lge.com. This offer is valid to anyone in receipt of this information for a period of three years after our last shipment of this product.

POWER: This unit operates on a mains supply of 200 - 240 V ~ 50 / 60 Hz.

Wiring: This unit is supplied with a BS 1363 approved main plug. When replacing the fuse, always use a fuse of the same rating and approved to BS 1362. Never use this plug with the fuse cover omitted. To obtain a replacement fuse cover contact your dealer. If the type of plug supplied is not suitable for the mains sockets in your home, then the plug should be removed and a suitable type fitted. Please refer to the wiring instructions below:

Warning: A mains plug removed from the mains lead of this unit must be destroyed. A mains plug with bared wires is hazardous if inserted in a mains socket. Do not connect either wire to the earth pin, marked with the letter E or with the earth symbol  or coloured green or green and yellow. If any other plug is fitted, use same rating of fuse in the plug.

Important: The wires in this mains lead are coloured in accordance with the following codes:

- **BLUE: NEUTRAL, BROWN: LIVE** - As the colours of the wires in the mains lead of this unit may not correspond with the coloured marking identifying the terminals in your plug, proceed as follows: The wire which is coloured blue must be connected to the terminal which is marked with the letter N or coloured black. The wire which is coloured brown must be connected to the terminal which is marked with the letter L or coloured red.

