

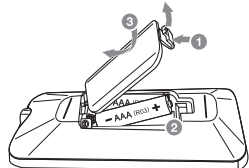
## Additional information

### LED Display table


LED displays and descriptions are as follows.

LED Display	Description
HELLO	HELLO
BYE	BYE
USB	USB
SD	SD
AUX AUDIO	AUX
PORTABLE AUDIO	PORTABLE
BT	BT
87.50 FM	RADIO (Displays current radio frequency)
READ	READ
PAUSE	PAUSE
ONE	ONE
ALL	ALL
RAND	RANDOM
DEL ALL	DEL ALL
DELETED ALL	DELETED ALL
NO USB	NO USB
NO SD	NO SD
NO SONG	NO SONG
NOT SUPPORT	NOT SUPPORT

### Replacement of battery




### Specifications

Power Requirements	Refer to the main label on the unit.
Power Consumption	Refer to the main label on the unit.
Dimensions (W x H x D)	Approx. 196.0 mm x 239.0 mm x 205.0 mm
Bus Power Supply (USB)	5 V  500 mA
Amplifier (Total RMS output power)	40 W RMS

Design and specifications are subject to change without notice.

**POWER:** This unit operates on a mains supply of 200 - 240 V ~, 50 / 60 Hz.

**Wiring:** This unit is supplied with a BS 1363 approved main plug. When replacing the fuse, always use of the same rating approved to BS 1362. Never use this plug with the fuse cover omitted. To obtain a replacement fuse cover contact your dealer. If the type of plug supplied is not suitable for the mains sockets in your home, then the plug should be removed and a suitable type fitted. Please refer to the wiring instructions below.

**Warning:** A mains plug removed from the mains lead of this unit must be destroyed. A mains plug with bared wires is hazardous if inserted in a mains socket. Do not connect either wire to the earth pin, marked with the letter E or with the earth symbol  or coloured green or green and yellow. If any other plug is fitted, use same rating of fuse in the plug.

**Important:** The wires in this mains lead are coloured in accordance with the following codes:

- BLUE: NEUTRAL, BROWN: LIVE: As the colours of the wires in the mains lead of this unit may not correspond with the coloured marking identifying the terminals in your plug, proceed as follows: The wire which is coloured blue must be connected to the terminal which is marked with the letter N or coloured black. The wire which is coloured brown must be connected to the terminal which is marked with the letter L or coloured red.

## SIMPLE MANUAL

# Multimedia Speaker System

Please read this manual carefully before operating your set and retain it for future reference.

To view the instructions of advanced features, visit <http://www.lg.com> and then download Owner's Manual. Some of the content in this manual may differ from your unit.

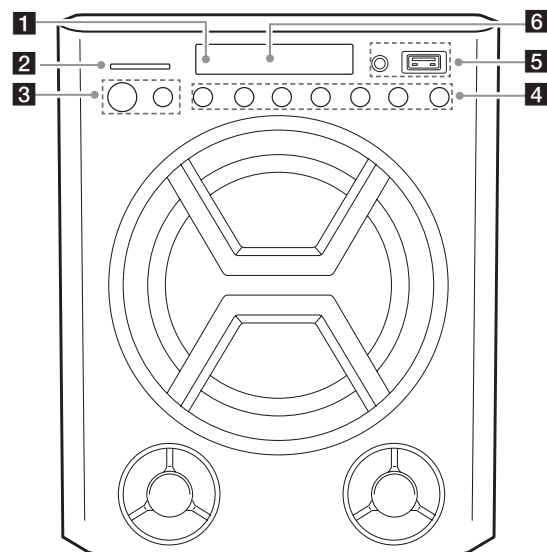
MODEL  
LK72B



[www.lg.com](http://www.lg.com)  
Copyright © 2018 LG Electronics Inc. All Rights Reserved.



## Front Panel



**1** Remote sensor

**2** SD card slot

You can play sound files by connecting the SD card.

**3** (Standby)

Turns the power on or off.

**F** (Function)

Selects the function and input source.

**4** **VOL** (Volume) **-/+**

Adjusts speaker volume.

**⏮ / ⏭** (Skip/Search)

- Skips backward or forwards.

- Searches for a section within a file.

- Selects the radio stations.

**⏸** (Play/Pause)

Starts or pauses playback.

**BASS** **-/+**

Adjusts bass level.

**5** USB port

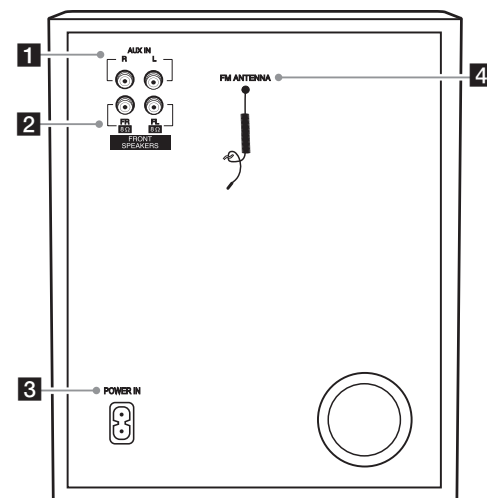
You can play sound files by connecting the USB device.

**PORT.** (Portable) **IN**

Connect a portable device.

**6** Display window

## Rear Panel



**1** **AUX IN** (L/R)

Connect an auxiliary device.

**2** **FRONT SPEAKERS** (FL/FR) connector

**3** **POWER IN**

**4** **FM ANTENNA**

## Speaker Connection

