



SIMPLE MANUAL

Wireless Sound Bar

ENGLISH

Please read this manual carefully before operating your set and retain it for future reference.

To view the instructions of advanced features,
visit <http://www.lg.com> and then download Owner's Manual.
Some of the content in this manual may differ from your unit.

MODEL
SJ5B

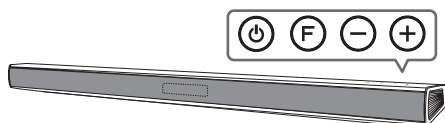


www.lg.com
Copyright © 2017 LG Electronics Inc. All Rights Reserved.



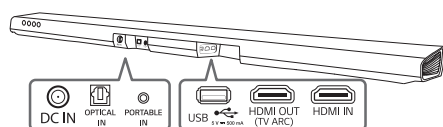
Front Panel

The buttons are located on the rear.



- Standby
- Selects Function
- Adjusts Volume

Rear Panel



- DC IN Connect to the AC adapter
- OPTICAL IN Connect to an Optical device
- PORTABLE IN Connect to a Portable device
- USB Connect to a USB device
- HDMI OUT (TV ARC) Connect to a TV
- HDMI IN Connect to HDMI out on a device

1 Subwoofer Connection

Place the wireless subwoofer near the speaker and follow steps below.

- 1 Connect the power cord of wireless subwoofer and sound bar to the outlet.
- 2 Turn on the main unit :
The sound bar and wireless subwoofer will be **automatically** connected. The subwoofer's green LED turns on.

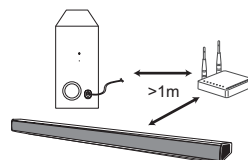
Subwoofer Connection Manually

If the subwoofer does not make sound, try to connect manually.

- 1 Press **Pairing** button on the rear of the wireless subwoofer.
 - The green LED on the rear of wireless subwoofer blinks quickly.
- 2 Turn on the main unit.
- 3 Pairing is completed.
 - The green LED on the rear of wireless subwoofer turns on.



Keep the sound bar and the subwoofer away from the device (ex. wireless router, microwave oven, etc.) over 1m to prevent wireless interference.

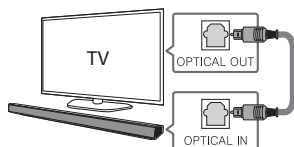


2 TV Connection

Connect with the Sound Bar and TV using Optical (A) or HDMI ARC (B).

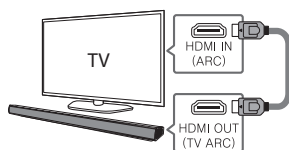
A Optical Connection

- 1 Connect the sound bar to the TV using Optical cable.
- 2 Set up [External Speaker (Optical)] on your TV setting menu.



B HDMI(ARC) Connection

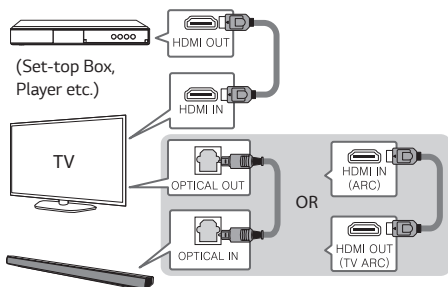
- 1 Connect the sound bar to the TV using HDMI cable.
- 2 Set up [External Speaker (HDMI ARC)] on your TV setting menu.



- HDMI connection is unavailable if your TV does not support HDMI ARC.
- If this unit is connected by OPTICAL and ARC at the same time, the ARC signal is a high priority.

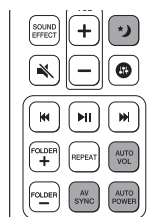
Additional Device Connection

- 1 Connect to the external device as follows.



- 2 Set the input source by pressing F on the remote control or unit repeatedly.

Remote control



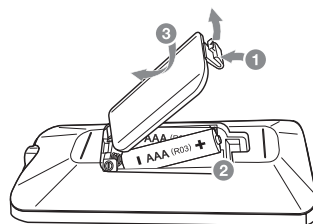
⏮: Turns down the volume at night.

AV SYNC: Synchronizes the audio and video.

AUTO VOL: Automatically adjusts too loud or low output volume level appropriately.



AUTO POWER: Automatically turns on by an input source.

Replacement of battery



Additional Information

Specification

Power consumption	Refer to the main label.
	Networked standby : 1.5 W (If all network ports are activated.)
AC adapter	<ul style="list-style-type: none"> Model : DA-38A25 Manufacturer : Asian Power Devices Inc. Input : 100 - 240 V ~ 50 - 60 Hz 1.2 A Output : 25 V  1.52 A
Dimensions (W x H x D)	Approx. 950 mm x 55 mm x 85 mm With foot
Bus Power Supply (USB)	5 V  500 mA
Amplifier (Total RMS Output power)	320 W RMS

Design and specifications are subject to change without notice.

How to disconnect the wireless network connection or the wireless device

Set up the AUTO POWER ON/OFF function to off and turn off the unit.

OPEN SOURCE SOFTWARE NOTICE INFORMATION

To obtain the source code under GPL, LGPL, MPL, and other open source licenses, that is contained in this product, please visit <http://opensource.lge.com>.

In addition to the source code, all referred license terms, warranty disclaimers and copyright notices are available for download.

LG Electronics will also provide open source code to you on CD-ROM for a charge covering the cost of performing such distribution (such as the cost of media, shipping and handling) upon email request to opensource@lge.com. This offer is valid for three (3) years from the date on which you purchased the product.

Declaration of Conformity



Hereby, LG Electronics declares that the radio equipment type Wireless Sound Bar is in compliance with Directive 2014/53/EU. The full text of the EU declaration of conformity is available at the following internet address:

<http://www.lg.com/global/support/cedoc/cedoc#>

For consideration of the user, this device should be installed and operated with a minimum distance of 20 cm between the device and the body.

Frequency range	Output power (Max.)
2402 to 2480 MHz	10 dBm
5730 to 5821 MHz	13 dBm











Российская Федерация

Импортер ООО "ЛГ Электроникс Рус"

Адрес импортера: 143160 Российская Федерация, Московская область, Рузский район, сельское поселение Дороховское, 86 км. Минского шоссе, д.9

Адрес производителя : ЛГ Электроникс (Хужоу) Инк., завод Хатаи
516006, Китай, пров. Гуандонг, г. Хужоу, Промышленная зона
Жонгкай, Индустриальный парк Хутай, ХуФенг Донг Уи Роуд, 13.

Сделано в Китае

Україна

Вироблено в : ЛГ Електронікс (Хужоу) Інк., завод Хатай
516006, Китай, пров. Гуандонг, м. Хужоу, Промислова зона Жонгкай,
Індустріальний парк Хутай, ХуФенг Донг Уі Роуд, 13.

Қазақстан Республикасы

Импорттаушы АҚ "ЭЛ Джи Электроникс Алматы Қазақстан", 050061, Алматы қ., к. Көкөрай, 2А

Өндірушінің мекенжайы: LG Electronics(Huizhou) Inc. Huitai Factory
516006, Қытай, Гуандонг ауданы, Хужоу қаласы,
Жонгкай өнеркәсіптік аймағы, Хутай Индустриялық саябағы,
ХуФенг Донг Уи Роуд, 13.

Қазақстан Республикасы территориясында тұтынушылардан келіп түскен талаптар мен ұсыныстарды қарайтын және тауарды жөндеу мен техникалық қызмет көрсететін ұжым:

АҚ «Эл Джи Электроникс Алматы Казахстан», 050061, Қазақстан Республикасы, Алматы қ., Көкөрай, 2А. Басқа сервис орталықтары жайында мағлұматты "Тұтынушыға қызмет көрсету орталығына" телефон шалу арқылы білуге болады.

Қытайда жасалған

