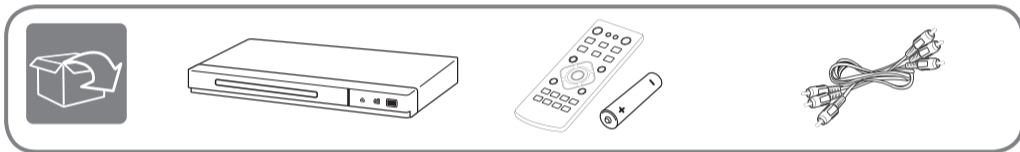


DVD Player

DP132

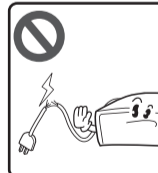
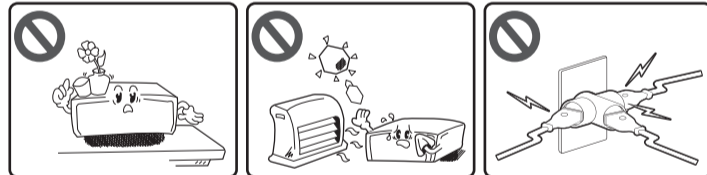
ENGLISH | SIMPLE MANUAL

To view the instructions of advanced features, visit <http://www.lg.com> and then download Owner's Manual. Some of the content in this manual may differ from your player.



MFL68022412

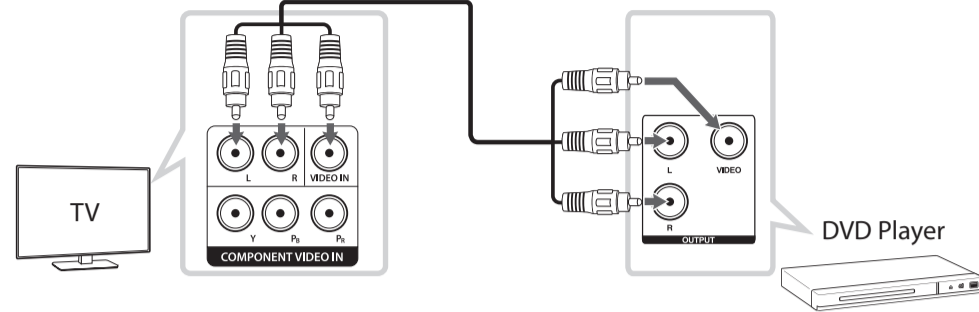
Safety Information



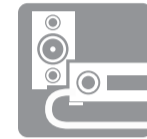
Connecting to your TV



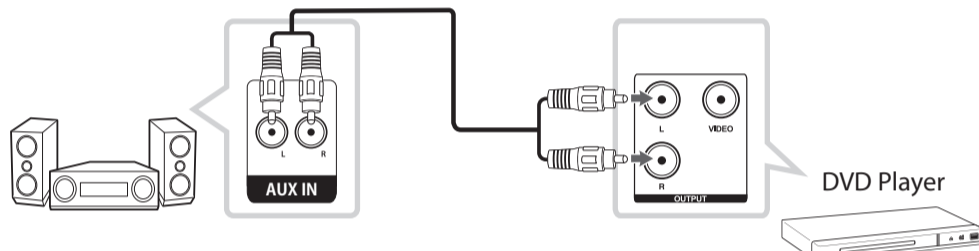
AUDIO / VIDEO OUTPUT



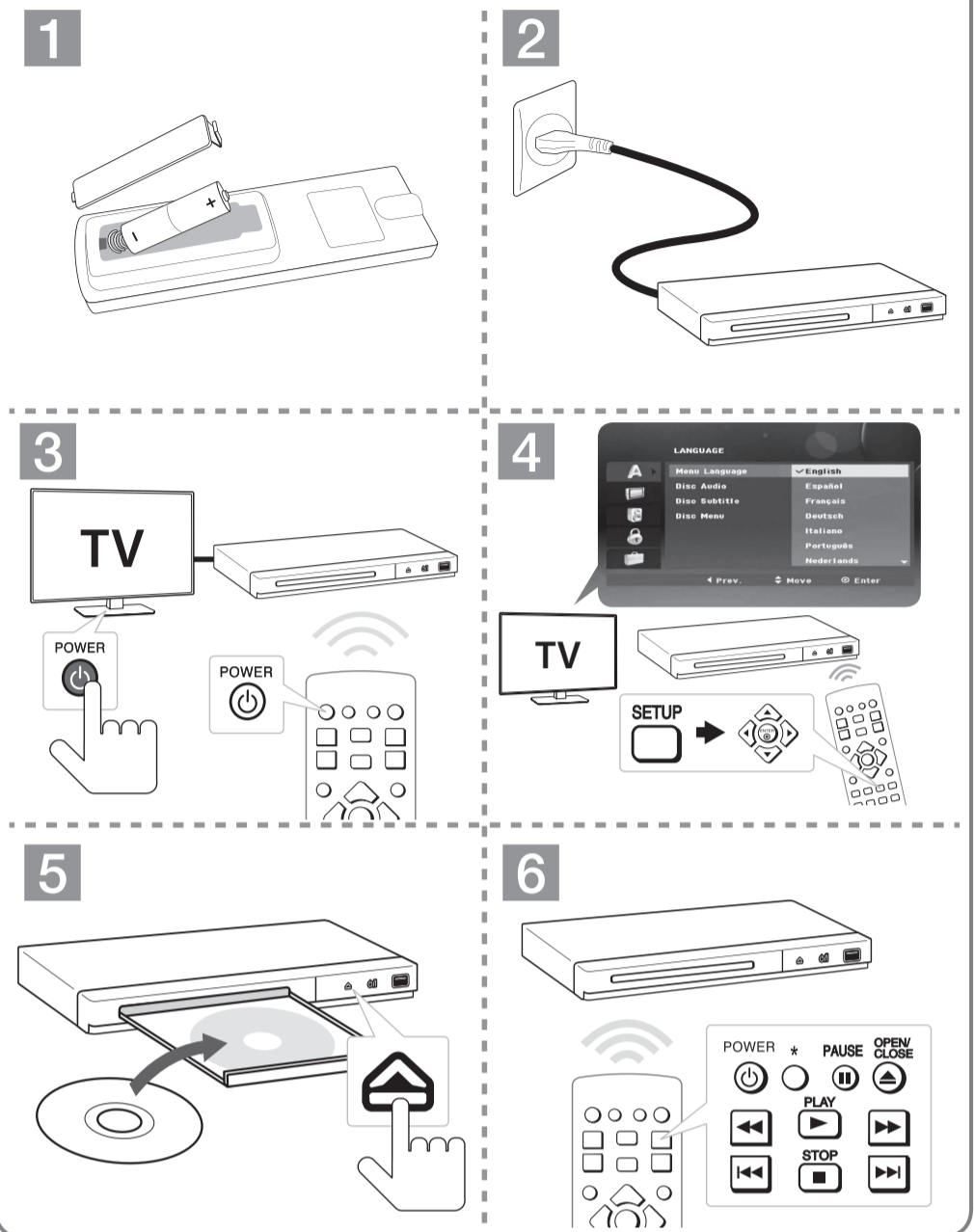
Connecting to an Amplifier



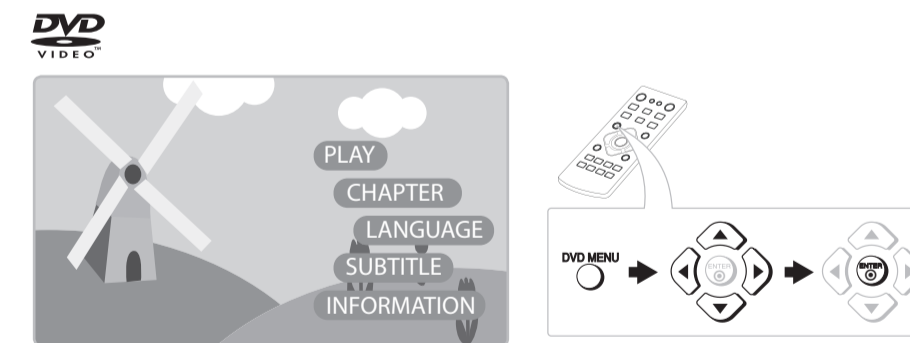
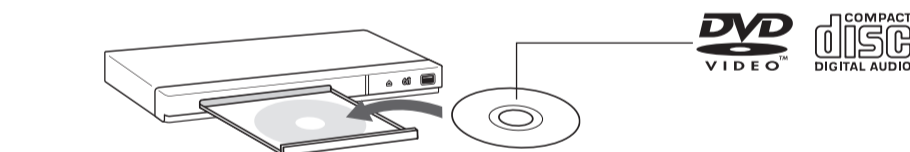
AUDIO OUTPUT (L/R)



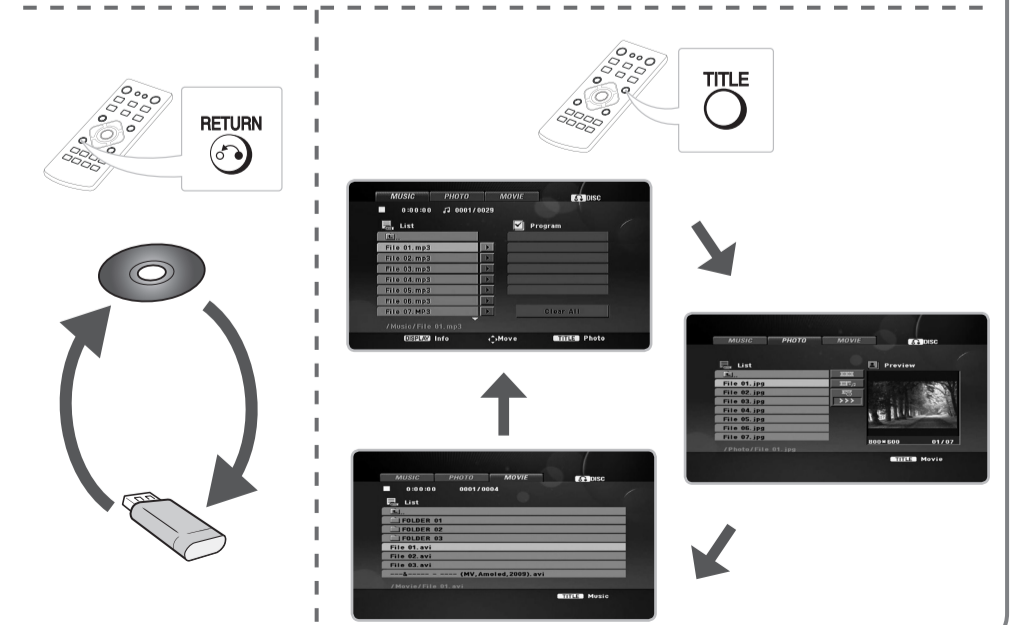
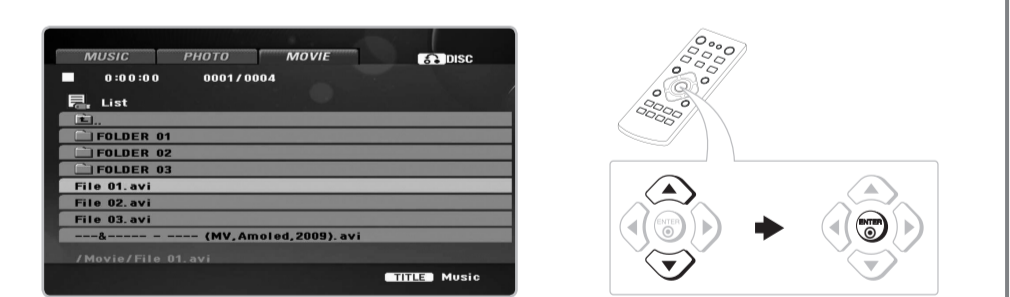
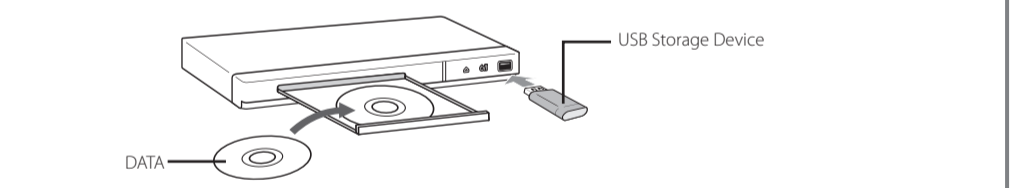
Basic Operation



Disc Playback

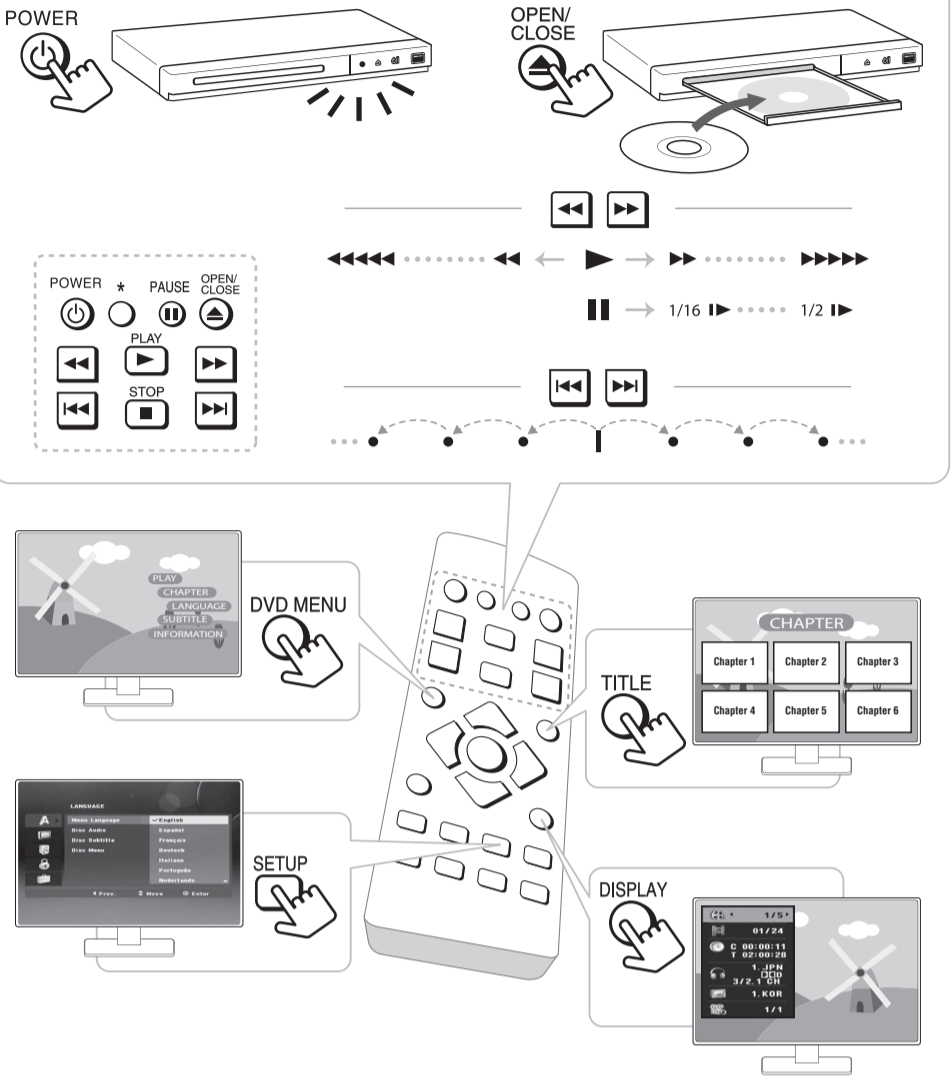


Data Playback





Remote Control

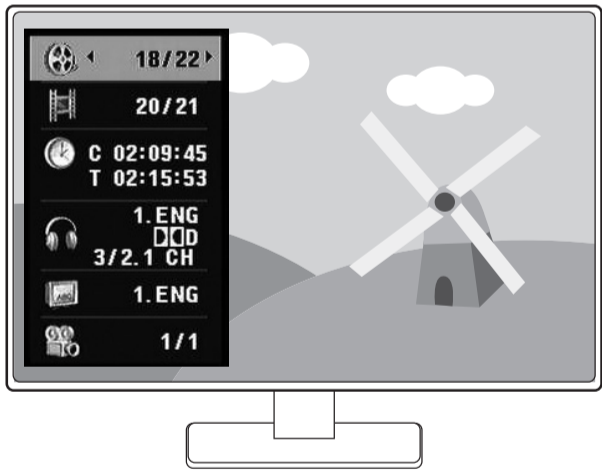


Specification

ENGLISH	
Power requirements	AC 200-240 V, 50 / 60 Hz
Power consumption	9 W
Dimensions (W x H x D)	Approx. 250 mm x 37.5 mm x 203 mm
Net Weight (Approx.)	0.9 kg
Bus Power Supply (USB)	DC 5 V 200 mA
Design and specifications are subject to change without notice.	



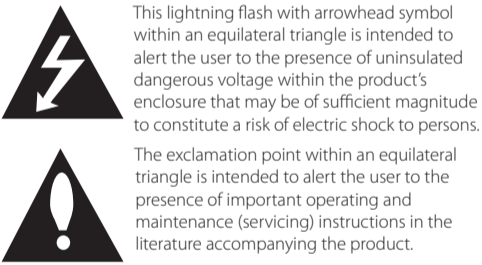
On-Screen Display



18/22	Title
20/21	Chapter
C 02:09:45 T 02:15:53	Time
1. ENG DDD 3/2.1 CH	Audio
1. ENG	Subtitle
1/1	Angle



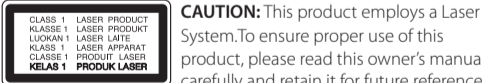
CAUTION: TO REDUCE THE RISK OF ELECTRIC SHOCK DO NOT REMOVE COVER (OR BACK). NO USER-SERVICEABLE PARTS INSIDE. REFER SERVICING TO QUALIFIED SERVICE PERSONNEL.



WARNING: TO PREVENT FIRE OR ELECTRIC SHOCK HAZARD, DO NOT EXPOSE THIS PRODUCT TO RAIN OR MOISTURE.

WARNING: Do not install this equipment in a confined space such as a book case or similar unit.

CAUTION: Do not block any ventilation openings. Install in accordance with the manufacturer's instructions. Slots and openings in the cabinet are provided for ventilation and to ensure reliable operation of the product and to protect it from over heating. The openings shall be never be blocked by placing the product on a bed, sofa, rug or other similar surface. This product shall not be placed in a built-in installation such as a bookcase or rack unless proper ventilation is provided or the manufacturer's instruction has been adhered to.



CAUTION: This product employs a Laser System. To ensure proper use of this product, please read this owner's manual carefully and retain it for future reference. Shall the unit require maintenance, contact an authorized service center. Use of controls, adjustments or the performance of procedures other than those specified herein may result in hazardous radiation exposure. To prevent direct exposure to laser beam, do not try to open the enclosure.

CAUTION concerning the Power Cord
To disconnect power from the mains, pull out the mains cord plug. When installing the product, ensure that the plug is easily accessible.

This device is equipped with a portable battery or accumulator. **Safety way to remove the battery or the battery from the equipment:** Remove the old battery or battery pack, follow the steps in reverse order than the assembly. To prevent contamination of the environment and bring on possible threat to human and animal health, the old battery or the battery put it in the appropriate container at designated collection points. Do not dispose of batteries or battery together with other waste. It is recommended that you use local, free reimbursement systems batteries and accumulators. The battery shall not be exposed to excessive heat such as sunshine, fire or the like.

CAUTION: The apparatus shall not be exposed to water (dripping or splashing) and no objects filled with liquids, such as vases, shall be placed on the apparatus.

