



LED LCD Monitor (LED Monitor) /  
 Moniteur ACL à DEL (moniteur à DEL) /  
 Monitor LCD LED (Monitor LED)

**English Easy Setup Guide**

Please read this Easy Setup Guide carefully before operating your product.

**Français Guide de configuration rapide**

Veillez lire ce guide de configuration rapide attentivement avant d'utiliser votre produit et de conserver pour pouvoir vous référer plus tard

**Español Guía Rápida de Configuración**

Por favor lea detenidamente esta Guía Rápida antes de operar con su producto.

19M38A	20M38A	22M38A	24M38A	27MP38VQ
19M38D	20M38D	22M38D	24M38D	27MP38HQ
19M38H	20M38H	22M38H	24M38H	19M38L

**a** or/ou/o **b**

**+**

**+**

**+**

**+**

19M38A	20M38A	22M38A	24M38A
19M38D	20M38D	22M38D	24M38D
19M38H	20M38H	22M38H	24M38H
19M38L			

19M38D	20M38D	22M38D
24M38D	27MP38VQ	

19M38H	20M38H	22M38H
24M38H	27MP38VQ	27MP38HQ
19M38L		

**+** Depending on country / Selon les pays /  
 En función del país



[www.lg.com](http://www.lg.com)



\* M B M 6 5 3 5 6 1 1 7 \*

(2406-REV11)



Printed in China / Imprimé en Chine



**English**

It is recommended that use the supplied components.

**Français**

Il est recommandé d'utiliser les composants fournis.

**Español**

Se recomienda utilizar los componentes suministrados.



**www.lg.com**

**English**

You can download manuals from the LGE website.

**Français**

Vous pouvez télécharger les guides pour ce produit à partir du site Web de LGE.

**Español**

Puede descargar los manuales del sitio web de LGE.



**English** - For EPEAT (EPEAT applied model)

Spare parts are available for 5 years after the end of production.

Spare parts include base assembly, adapter and cables.

It may differ by model, you can get the more information by visiting to this website:

<https://lgparts.com/>

**Français** - Pour EPEAT (modèles pour lesquels s'applique EPEAT)

Les pièces de rechange sont disponibles jusqu'à cinq ans après la fin de la production.

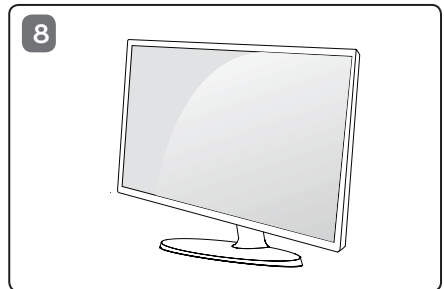
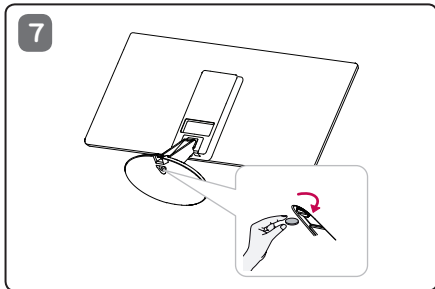
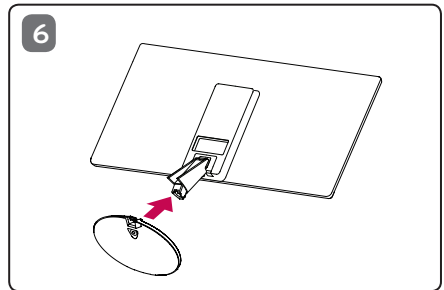
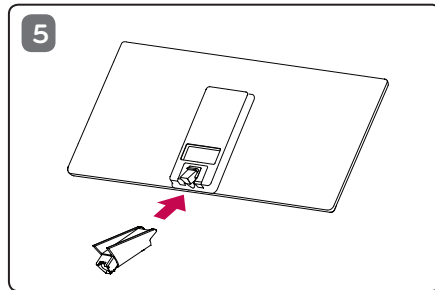
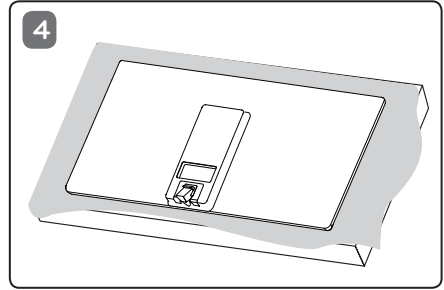
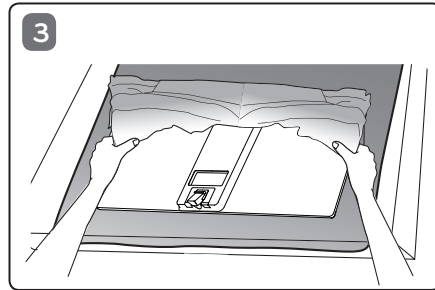
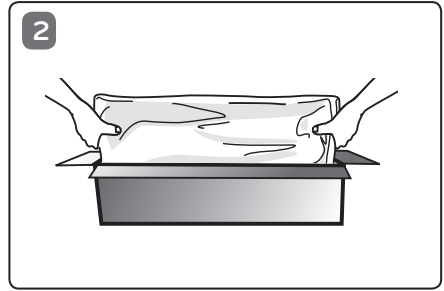
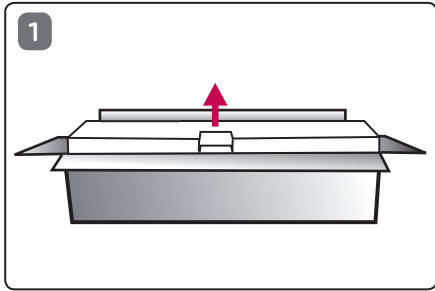
Elles comprennent les pièces pour l'assemblage de la base, l'adaptateur et les câbles.

Les pièces de rechange peuvent varier selon le modèle. Vous pouvez obtenir plus de renseignements en visitant le site Web

<https://lgparts.com/>

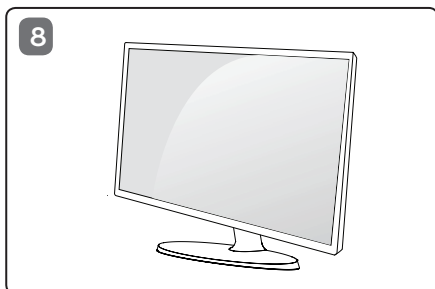
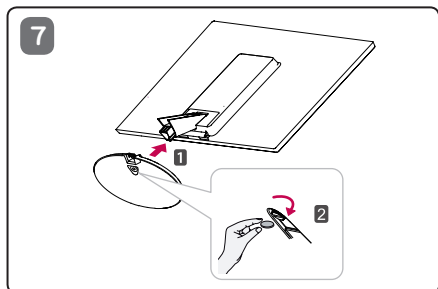
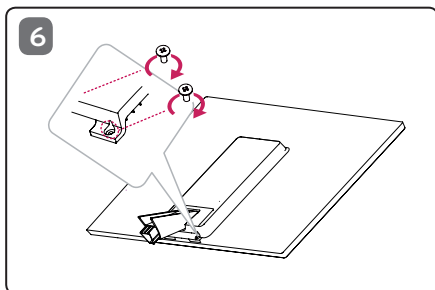
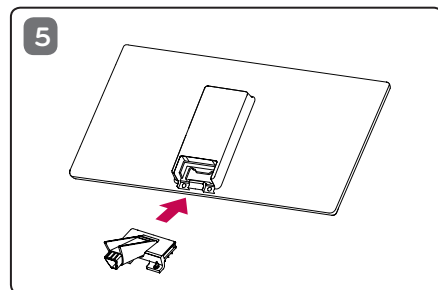
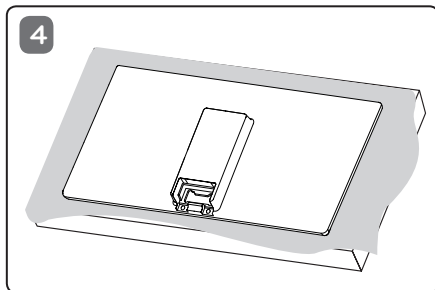
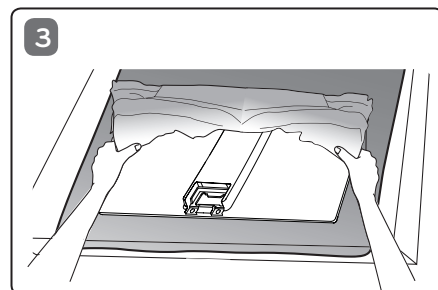
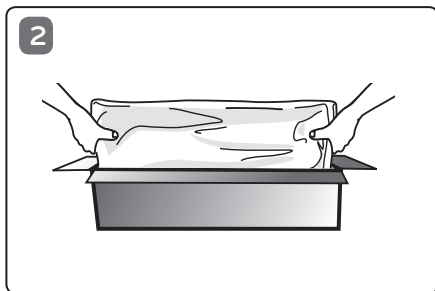
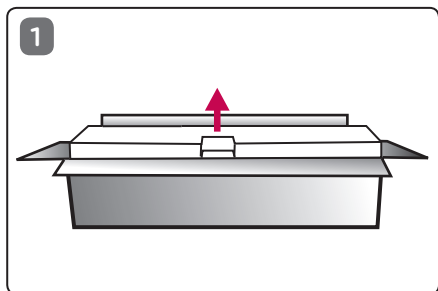
# 1

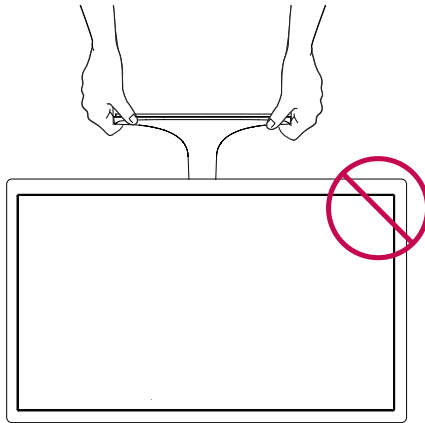
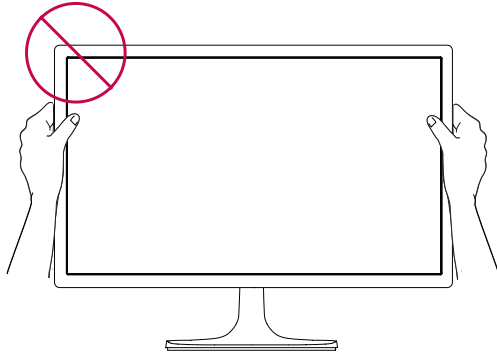
19M38A	20M38A	22M38A	24M38A
19M38D	20M38D	22M38D	24M38D
19M38H	20M38H	22M38H	24M38H
19M38L			



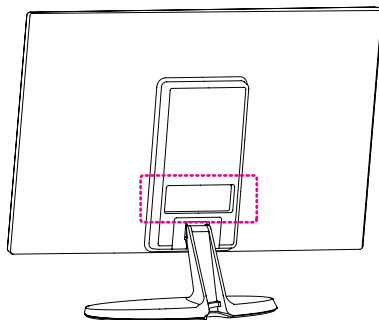
27MP38VQ

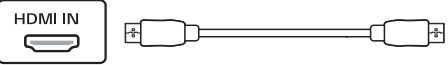
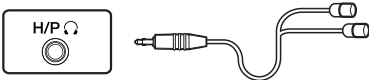

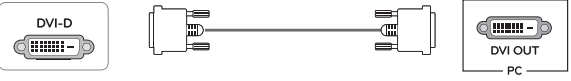
27MP38HQ





2

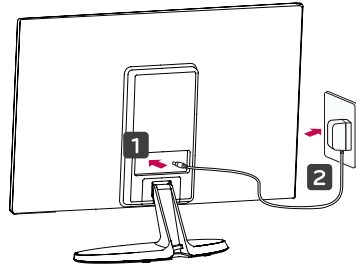
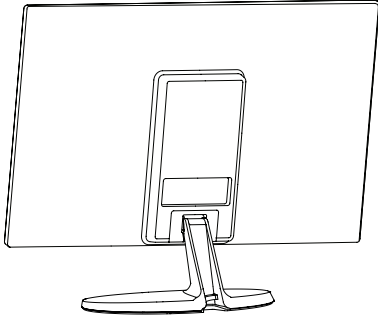


 <p>HDMI IN</p> <p>HDMI OUT AV/PC</p>  <p>H/P</p>	<table border="1"> <tbody> <tr> <td>19M38H</td> <td>20M38H</td> <td>22M38H</td> </tr> <tr> <td>24M38H</td> <td>27MP38HQ</td> <td>19M38L</td> </tr> <tr> <td colspan="3">27MP38VQ</td> </tr> </tbody> </table>	19M38H	20M38H	22M38H	24M38H	27MP38HQ	19M38L	27MP38VQ								
19M38H	20M38H	22M38H														
24M38H	27MP38HQ	19M38L														
27MP38VQ																
 <p>D-SUB IN</p> <p>RGB OUT PC</p>	<table border="1"> <tbody> <tr> <td>19M38H</td> <td>20M38H</td> <td>22M38H</td> </tr> <tr> <td>24M38H</td> <td>27MP38HQ</td> <td>19M38L</td> </tr> <tr> <td>19M38A</td> <td>20M38A</td> <td>19M38D</td> </tr> <tr> <td>22M38A</td> <td>24M38A</td> <td>22M38D</td> </tr> <tr> <td>20M38D</td> <td>24M38D</td> <td>27MP38VQ</td> </tr> </tbody> </table>	19M38H	20M38H	22M38H	24M38H	27MP38HQ	19M38L	19M38A	20M38A	19M38D	22M38A	24M38A	22M38D	20M38D	24M38D	27MP38VQ
19M38H	20M38H	22M38H														
24M38H	27MP38HQ	19M38L														
19M38A	20M38A	19M38D														
22M38A	24M38A	22M38D														
20M38D	24M38D	27MP38VQ														
 <p>DVI-D</p> <p>DVI OUT PC</p>	<table border="1"> <tbody> <tr> <td>19M38D</td> <td>20M38D</td> <td>27MP38VQ</td> </tr> <tr> <td>22M38D</td> <td>24M38D</td> <td></td> </tr> </tbody> </table>	19M38D	20M38D	27MP38VQ	22M38D	24M38D										
19M38D	20M38D	27MP38VQ														
22M38D	24M38D															

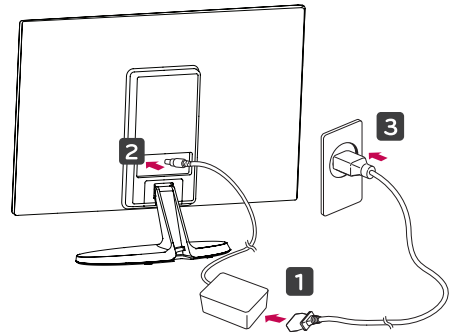


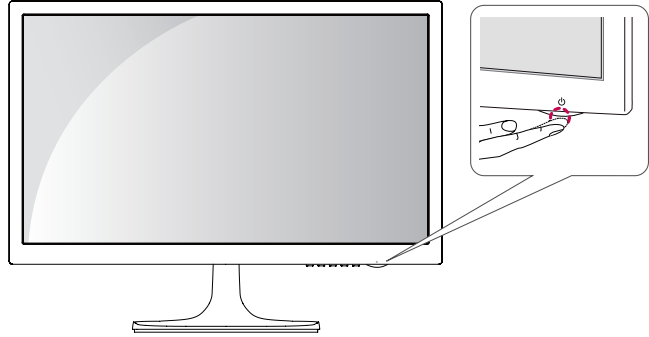
<b>English</b>	Using a DVI to HDMI / DP(DisplayPort) to HDMI cable may cause compatibility issues. Make sure to use the supplied cable. Otherwise , this may cause the device to malfunction.
<b>Français</b>	L'utilisation d'un câble DVI à HDMI/DP (DisplayPort) à HDMI peut présenter des problèmes de compatibilité. Assurez-vous d'utiliser le câble fourni avec le produit. Le non-respect de cette consigne peut entraîner un dysfonctionnement du périphérique.
<b>Español</b>	El uso de un cable de DVI a HDMI / DP (DisplayPort) a HDMI puede causar problemas de compatibilidad. Asegúrese de utilizar el cable suministrado con el producto. De lo contrario, puede provocar que el dispositivo no funcione correctamente.

# 3 DC-IN



or/ou/o





Dimensions (Width x Height x Depth)				Weight	Recommend Resolution	
19M38A/19M38D/19M38H/19M38L	With Stand :	441.3 mm x 350.2 mm x 167.8 mm	Without Stand :	441.3 mm x 278.1 mm x 57.3 mm	1.9 kg	1366 x 768 @ 60 Hz
20M38A/20M38D/20M38H		463.0 mm x 358.8 mm x 167.8 mm		463.0 mm x 286.5 mm x 57.4 mm	2.0 kg	1600 x 900 @ 60 Hz
22M38A/22M38D		508.5 mm x 386.5 mm x 186.7 mm		508.5 mm x 315.7 mm x 56.8 mm	2.4 kg	1920 x 1080 @ 60 Hz
22M38H		508.5 mm x 386.5 mm x 186.7 mm		508.5 mm x 315.7 mm x 56.8 mm	2.7 kg	1920 x 1080 @ 60 Hz
24M38A/24M38D/24M38H		556.2 mm x 415.1 mm x 186.7 mm		556.2 mm x 344.0 mm x 56.8 mm	2.8 kg	1920 x 1080 @ 60 Hz
27MP38HQ/27MP38VQ		641.4 mm x 459.7 mm x 203.0 mm		641.4 mm x 393.0 mm x 48.2 mm	4.4 kg	1920 x 1080 @ 60 Hz
Dimensions (largeur x hauteur x profondeur)				Poids	Résolution recommandée	
19M38A/19M38D/19M38H/19M38L	Socle inclus :	441.3 mm x 350.2 mm x 167.8 mm	Socle non inclus :	441.3 mm x 278.1 mm x 57.3 mm	1.9 kg	1366 x 768 à 60 Hz
20M38A/20M38D/20M38H		463.0 mm x 358.8 mm x 167.8 mm		463.0 mm x 286.5 mm x 57.4 mm	2.0 kg	1600 x 900 à 60 Hz
22M38A/22M38D		508.5 mm x 386.5 mm x 186.7 mm		508.5 mm x 315.7 mm x 56.8 mm	2.4 kg	1920 x 1080 à 60 Hz
22M38H		508.5 mm x 386.5 mm x 186.7 mm		508.5 mm x 315.7 mm x 56.8 mm	2.7 kg	1920 x 1080 à 60 Hz
24M38A/24M38D/24M38H		556.2 mm x 415.1 mm x 186.7 mm		556.2 mm x 344.0 mm x 56.8 mm	2.8 kg	1920 x 1080 à 60 Hz
27MP38HQ/27MP38VQ		641.4 mm x 459.7 mm x 203.0 mm		641.4 mm x 393.0 mm x 48.2 mm	4.4 kg	1920 x 1080 à 60 Hz
Dimensions (ancho x alto x profundo)				Peso	Resolución recomendada	
19M38A/19M38D/19M38H/19M38L	Pie incluido :	441.3 mm x 350.2 mm x 167.8 mm	Pie incluido :	441.3 mm x 278.1 mm x 57.3 mm	1.9 kg	1366 x 768 a 60 Hz
20M38A/20M38D/20M38H		463.0 mm x 358.8 mm x 167.8 mm		463.0 mm x 286.5 mm x 57.4 mm	2.0 kg	1600 x 900 a 60 Hz
22M38A/22M38D		508.5 mm x 386.5 mm x 186.7 mm		508.5 mm x 315.7 mm x 56.8 mm	2.4 kg	1920 x 1080 a 60 Hz
22M38H		508.5 mm x 386.5 mm x 186.7 mm		508.5 mm x 315.7 mm x 56.8 mm	2.7 kg	1920 x 1080 a 60 Hz
24M38A/24M38D/24M38H		556.2 mm x 415.1 mm x 186.7 mm		556.2 mm x 344.0 mm x 56.8 mm	2.8 kg	1920 x 1080 a 60 Hz
27MP38HQ/27MP38VQ		641.4 mm x 459.7 mm x 203.0 mm		641.4 mm x 393.0 mm x 48.2 mm	4.4 kg	1920 x 1080 a 60 Hz

19M38A/19M38D/19M38H/19M38L	Potencia requerida	19 V ~ 0,8 A	
	Especificaciones de Adaptador de ca/cc	Entrada	100-240 V~ 50/60 Hz 0,6 A o 0,7A o 0,8 A 100-127 V~ 60 Hz 0,7A
		Salida	19 V ~ 0,84 A
20M38A/20M38D/20M38H	Potencia requerida	19 V ~ 0,8 A	
	Especificaciones de Adaptador de ca/cc	Entrada	100-240 V~ 50/60 Hz 0,6 A o 0,8 A 100-127 V~ 60 Hz 0,7A
		Salida	19 V ~ 0,84 A
22M38A/22M38D/22M38H	Potencia requerida	19 V ~ 1,2 A o 19 V ~ 0,8 A	
	Especificaciones de Adaptador de ca/cc	Entrada	100-240 V~ 50/60 Hz 1,0 A o 1,1 A 100-127 V~ 60 Hz 0,7A 100-127 V~ 50/60 Hz 1,1A 100-240 V~ 50/60 Hz 0,6 A o 0,8 A
		Salida	19 V ~ 1,3 A o 19 V ~ 0,84 A
24M38A/24M38D/24M38H	Potencia requerida	19 V ~ 1,2 A	
	Especificaciones de Adaptador de ca/cc	Entrada	100-240 V~ 50/60 Hz 1,0 A o 1,1 A 100-127 V~ 60 Hz 0,7A 100-127 V~ 50/60 Hz 1,1A
		Salida	19 V ~ 1,3 A
27MP38HQ/27MP38VQ	Potencia requerida	19 V ~ 1,6 A o 19 V ~ 1,3 A	
	Especificaciones de Adaptador de ca/cc	Entrada	100-240 V~ 50/60 Hz 1,0 A o 1,1 A 100-127 V~ 60Hz 1,0A 100-127 V~ 50/60 Hz 1,1 A
		Salida	19 V ~ 1,7 A o 19 V ~ 1,3 A