


Additional Information

Specification

Power Requirements	Refer to the main label.
Power consumption	Refer to the main label.
Dimensions (W x H x D)	Approx. 990.0 mm X 97.0 mm X 125.0 mm With foot
Bus Power Supply (USB)	5 V  500 mA
Amplifier (Total RMS Output power)	600 W RMS

Design and specifications are subject to change without notice.

OPEN SOURCE SOFTWARE NOTICE
INFORMATION

To obtain the source code under GPL, LGPL, MPL, and other open source licenses, that is contained in this product, please visit <http://opensource.lge.com>.


In addition to the source code, all referred license terms, warranty disclaimers and copyright notices are available for download.

LG Electronics will also provide open source code to you on CD-ROM for a charge covering the cost of performing such distribution (such as the cost of media, shipping, and handling) upon email request to opensource@lge.com.

This offer is valid for a period of three years after our last shipment of this product. This offer is valid to anyone in receipt of this information.

POWER: This unit operates on a mains supply of 110 - 240 V - 50 / 60 Hz

Wiring: This unit is supplied with a BS 1363 approved main plug. When replacing the fuse, always use a fuse of the same rating and approved to BS 1362. Never use this plug with the fuse cover omitted. To obtain a replacement fuse cover contact your dealer. If the type of plug supplied is not suitable for the mains sockets in your home, then the plug should be removed and a suitable type fitted. Please refer to the wiring instructions below:

Warning: A mains plug removed from the mains lead of this unit must be destroyed. A mains plug with bared wires is hazardous if inserted in a mains socket. Do not connect either wire to the earth pin, marked with the letter E or with the earth symbol  or coloured green or green and yellow. If any other plug is fitted, use same rating of fuse in the plug.

Important: The wires in this mains lead are coloured in accordance with the following codes:

- **BLUE: NEUTRAL, BROWN: LIVE** - As the colours of the wires in the mains lead of this unit may not correspond with the coloured marking identifying the terminals in your plug, proceed as follows: The wire which is coloured blue must be connected to the terminal which is marked with the letter N or coloured black. The wire which is coloured brown must be connected to the terminal which is marked with the letter L or coloured red.



SIMPLE MANUAL

Wireless
Sound Bar

Please read this manual carefully before operating your set and retain it for future reference.

To view the instructions of advanced features, visit <http://www.lg.com> and then download Owner's Manual. Some of the content in this manual may differ from your unit.

MODEL

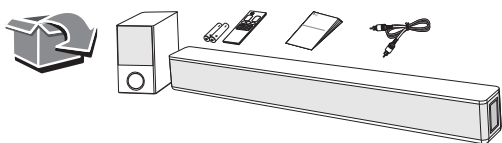
SNH5



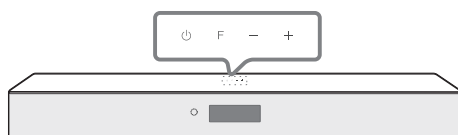
MFL71670162
2102_Rev02

www.lg.com

Copyright © 2020-2021 LG Electronics Inc. All Rights Reserved.

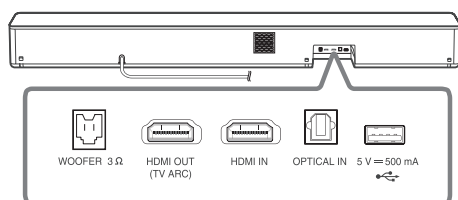


Front Panel



⏻ (Standby) Switches the unit ON or OFF.
 F (Function) Selects function.
 -/+ (Volume) Adjusts volume.

Rear Panel



WOOFER 3 Ω Connect to a Subwoofer.
HDMI OUT (TV ARC) Connect to a TV.
HDMI IN Connect to device with HDMI OUT.
OPTICAL IN Connect to an optical device.
USB Port Connect to a USB device.

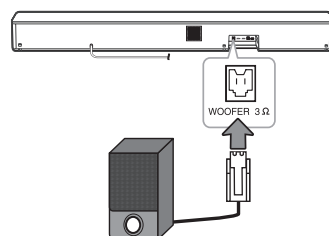


Make sure to properly align and connect the optical cable; improper alignment may cause damage to the jack.

Subwoofer Connection

Place the subwoofer near the sound bar and follow steps below.

- 1 Connect a subwoofer cord to the sound bar.
 - When connecting a Subwoofer cord to the unit, insert the connector until it clicks.
- 2 Turn on the sound bar.

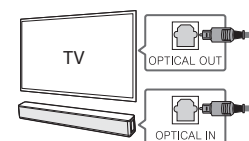


TV Connection

Connect the sound bar and TV using Optical (A) or HDMI ARC (B).

A Optical Connection

- 1 Connect the sound bar to the TV using Optical cable.
- 2 Set up [External Speaker (Optical)] on your TV setting menu.



B HDMI (ARC) Connection

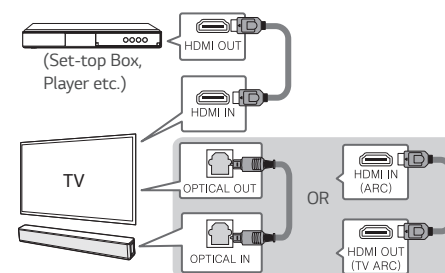
- 1 Connect the sound bar to the TV using HDMI cable.
- 2 Set up [External Speaker (HDMI ARC)] on your TV setting menu.



- HDMI connection is unavailable if your TV does not support HDMI ARC.
- If this unit is connected by OPTICAL and ARC at the same time, the ARC signal has a higher priority.

Additional Device Connection

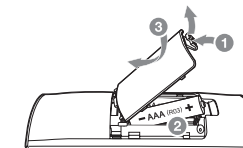
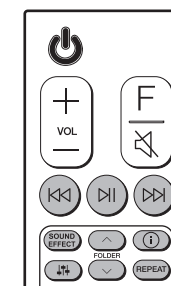
- 1 Connect to the external device like as follow.



- 2 Set the input source by pressing F repeatedly.

Remote control

Replacement of Battery



⏮/⏭: Skip/Search

⏸: Play/Pause

- **Bluetooth connection lock (BT LOCK):** Select the **Bluetooth** function by pressing **F** repeatedly. Long press **⏸** and press it again to limit Bluetooth connection to only BT and LG TV.

SOUND EFFECT: Selects a sound effect mode.

- **TV remote:** Long press **SOUND EFFECT** and press it again to use TV remote control.

FOLDER ^/∨: Searches a folder.

i: Displays the information of a file, an input source or connected **Bluetooth** device name.

- **Auto Power ON/OFF:** Long press **i** and press it again.

⏮/⏭: Adjusts the sound level of the adjustable speakers.

REPEAT: Listens to your files repeatedly or randomly.