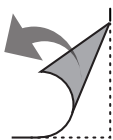
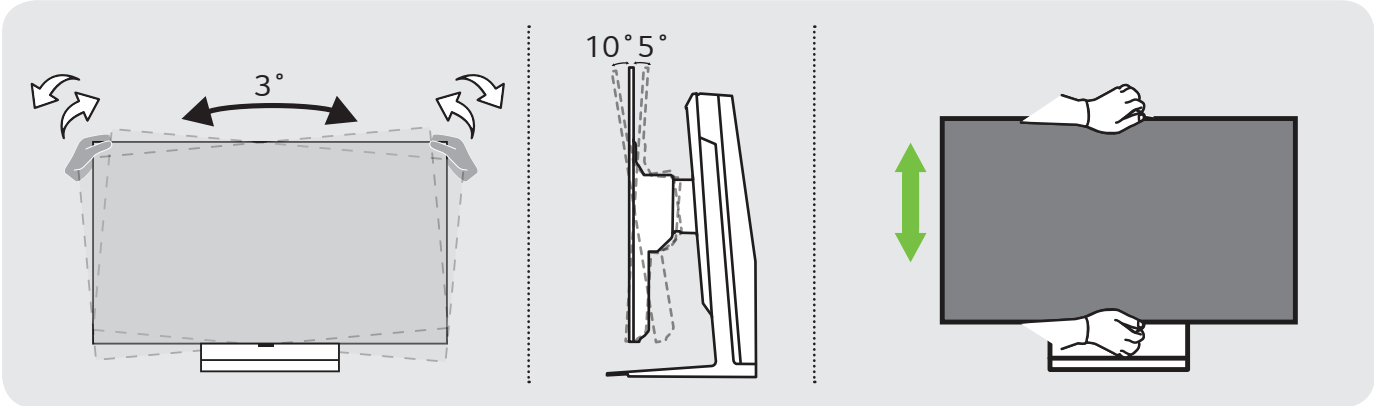
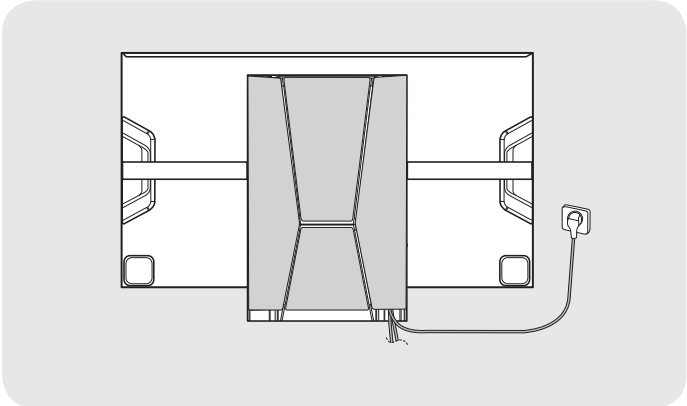
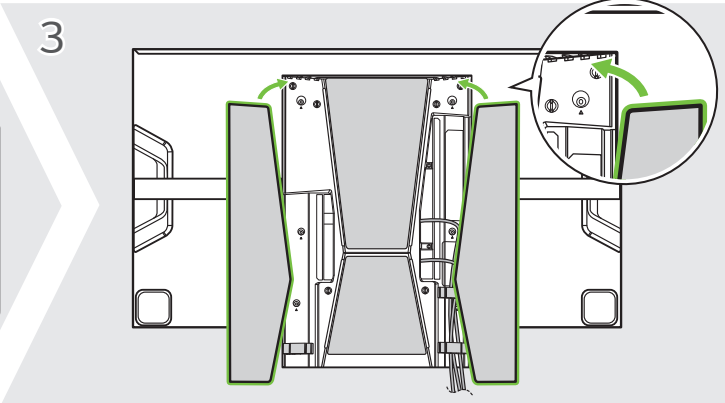
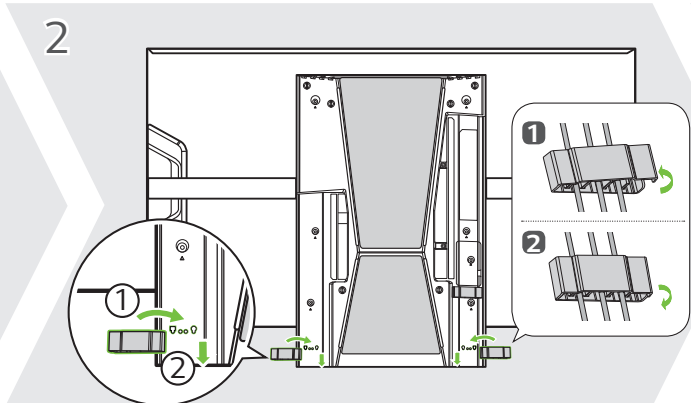
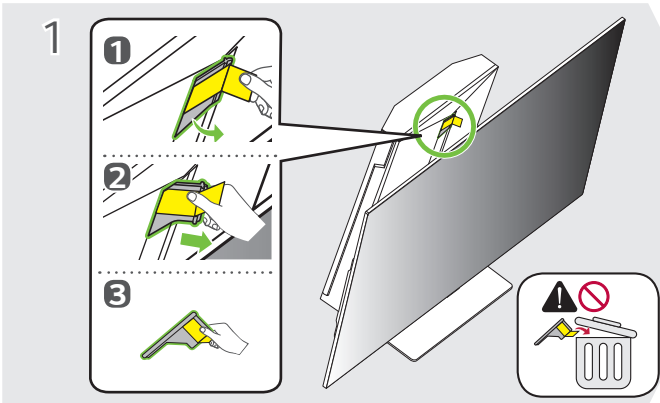
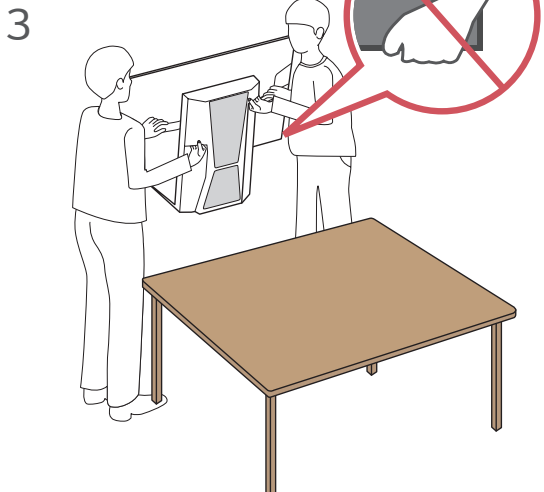
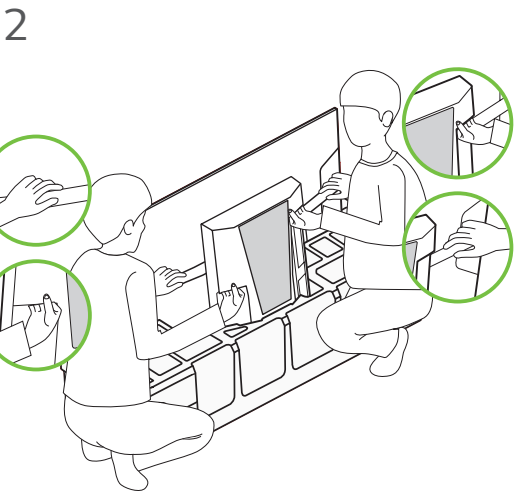
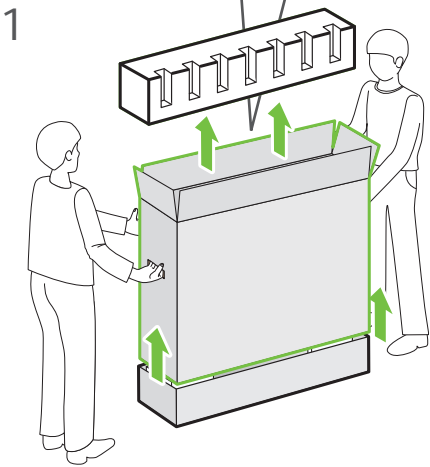
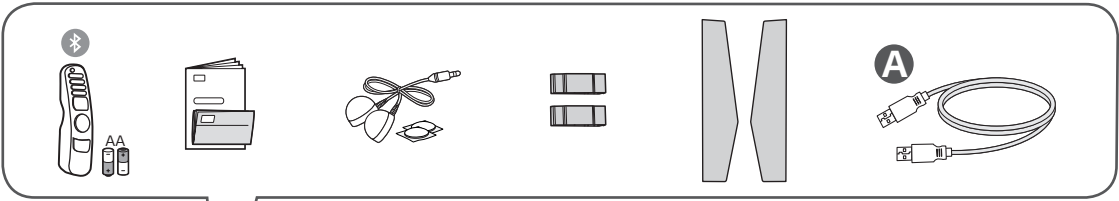
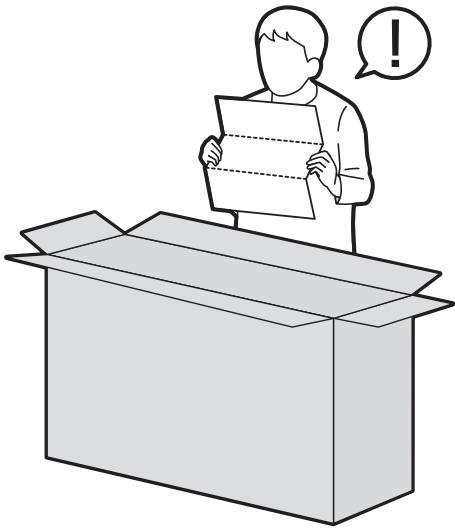
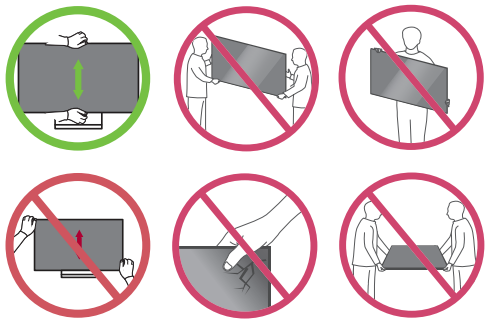
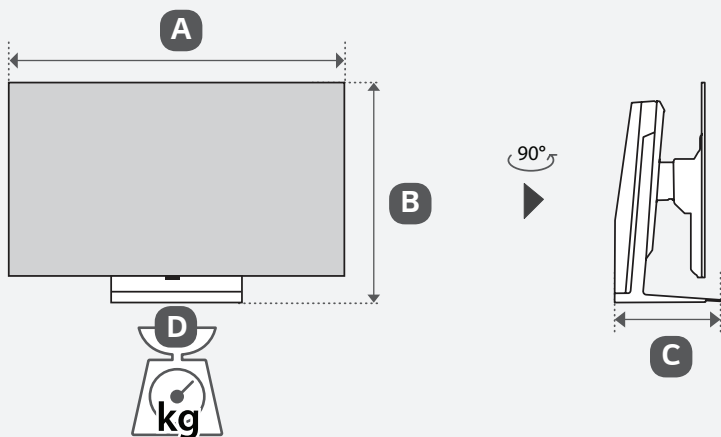
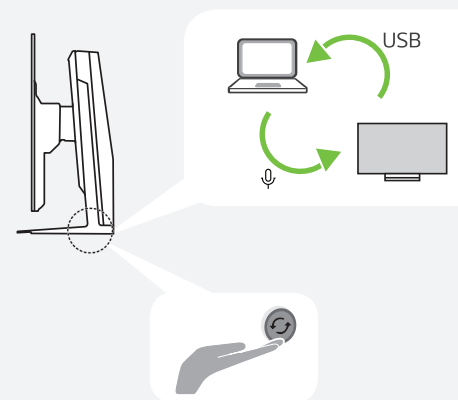
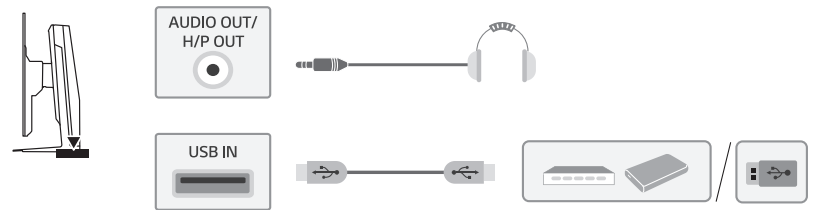
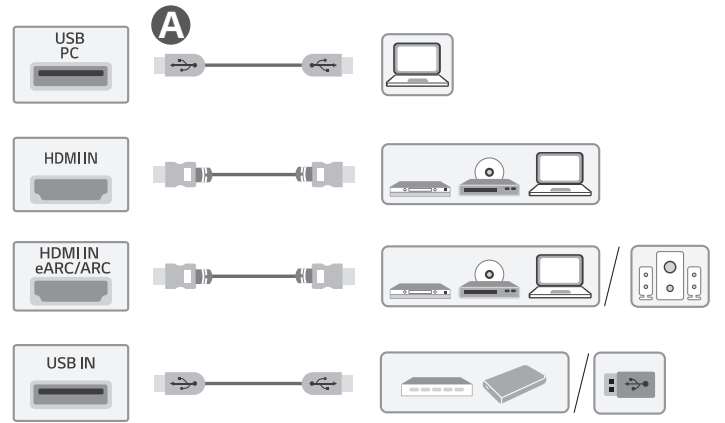
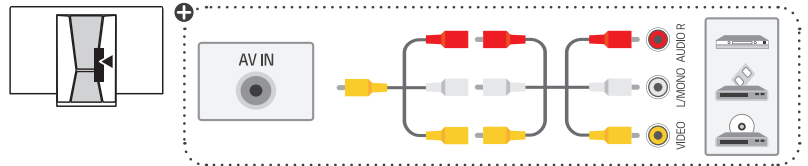
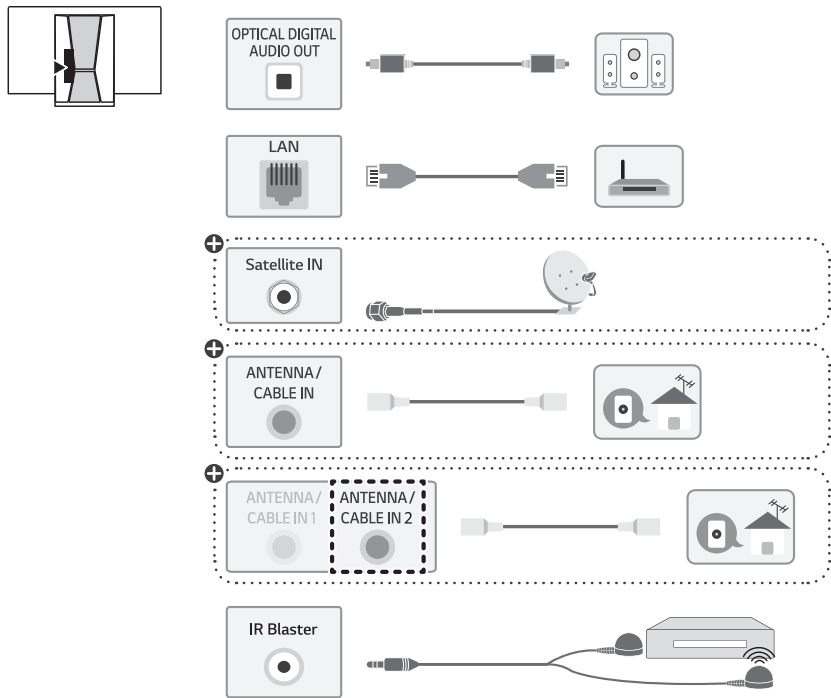


LX3*





	A	B	C	D
	(mm)			(kg)
42LX3QPSA 42LX3Q6LA	937.1	614 ~ 754	296.8	22.6
Power requirement / متطلبات الطاقة / Alimentation / Requisito de alimentação / แรงดันและความถี่ไฟฟ้า / Nguồn điện yêu cầu	AC 100-240 V - 50/60 Hz تيار متردد 240-100 فولت ~ 60/50 هرتز			



+ : Depending on model / حسب الطراز / Selon le modèle / Dependendo do modelo / ขึ้นอยู่กับรุ่น / Tùy theo mã sản phẩm

English

• Read **Safety and Reference**.

• قراءة الأمان والمرجع.

العربية

Français

• Lire le document **Sécurité et référence**.

Português

• Consulte o manual **Segurança e referência**.

ภาษาไทย

• โปรดอ่านคู่มือผู้ใช้ความปลอดภัยและการอ้างอิง

Tiếng Việt

• Đọc phần **An toàn và Tham khảo**.

English

• The Analog Gender adapter can be purchased separately at Customer Service.

• يمكن شراء النوع التناظري بشكل منفصل من دعم عملاء LG.

العربية

Français

• L'adaptateur analogique peut être acheté séparément auprès du SAV.

Português

• O adaptador analógico pode ser comprado em separado no Serviço de Apoio ao Cliente da LG.

ภาษาไทย

• สายรวมสัญญาณ Component และ AV สามารถซื้อแยกต่างหากได้ที่ศูนย์บริการของบริษัท

Tiếng Việt

• Đầu chuyển tín hiệu analog có thể mua riêng tại Trung tâm chăm sóc khách hàng của LG.