



SIMPLE MANUAL

KARAOKE MINI HI-FI SYSTEM

ENGLISH

Please read this manual carefully before operating your set and retain it for future reference.
To view the instructions of advanced features, visit <http://www.lg.com> and then download Owner's Manual. Some of the content in this manual may differ from your unit.

MODEL
DM8360K



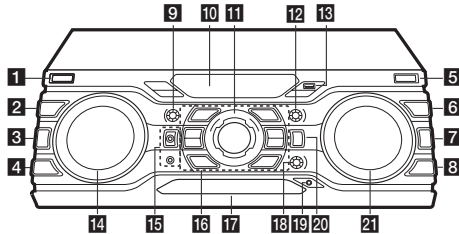
MFL69372118

www.lg.com

Copyright © 2017-2018 LG Electronics Inc. All Rights Reserved.

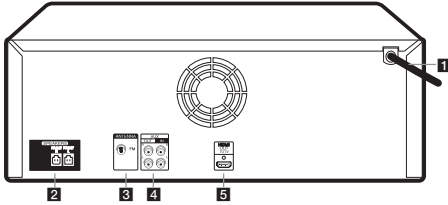


Front Panel



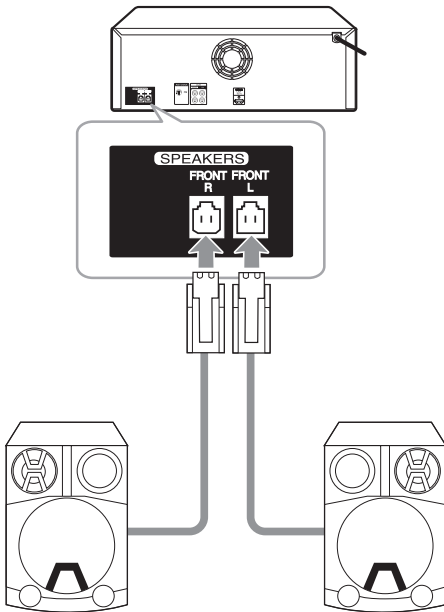
- 1** **⏻/I (Standby/On)**
Turn the power on or off.
- 2** **CLOCK**
Sets a clock and checks a time.
- 3** **OK / SET**
-Acknowledges menu selection.
-Presetting the radio stations.
- 4** **ALARM**
With the ALARM function you can turn Disc, USB play and Tuner reception on at a desired time.
- 5** **DEMO / REPEAT**
-Shows Demo mode.
-Listens to your tracks/files repeatedly or randomly.
- 6** **REGION EQ**
Chooses region equalizer.
- 7** **VOICE CANCELLER**
You can enjoy the function as karaoke, by reducing singer vocal of music in the various source
- 8** **BASS BLAST**
Press to select BASS effect directly.
- 9** **ECHO VOL (Volume)**
Adjusts echo volume.
- 10** **Display window**
- 11** **MASTER VOLUME**
Adjusts speaker volume.
- 12** **MIC VOL (Microphone Volume)**
Adjusts Mic volume.
- 13** **USB Port**
You can play sound files by connecting the USB device.
- 14** **MULTI CONTROL / TUNING**
-Moves to the another file/ track.
-Tunes in the desired radio station.
-Adjusts clock time or alarm setting.
- 15** **MIC 1 / 2 (Microphone) jack**
Connect a microphone.
- 16** **□ (Stop)**
Stops playback.
>|| (Play/Pause)
- Starts or pauses playback.
- Selects Stereo/Mono.
△ (Open/Close)
Opens and closes the disc tray.
USER EQ
Selects the sound effect created by your own.
HOME
Goes to Home menu.
AUTO DJ
Selects the AUTO DJ mode.
I<< / >>I (Skip)
Goes to the next or previous chapter / track / file.
- 17** **Disc tray**
- 18** **USER EQ LEVEL**
Adjusts sound level when setting USER EQ.
- 19** **PORT. (Portable) IN jack**
Connect a portable device.
- 20** **F (Function)**
Selects the function and input source.
- 21** **SOUND EFFECT**
Selects a sound effect mode.

Rear Panel



- 1** Power cord
- 2** SPEAKERS connector
- 3** ANTENNA (FM)
- 4** AUX IN (L/R)
Connect an auxiliary device.
AUX OUT (L/R)
Connect to an input of external device.
- 5** HDMI OUT TO TV
Connect to TV.

Speaker Connection



2

Home Menu

Home menu appears on the TV screen. Enjoy various functions on the player.



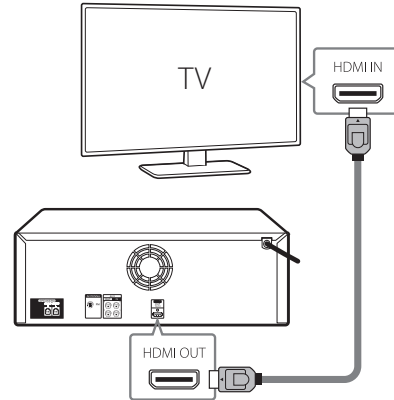
1

TV Connection

HDMI Connection :

Connect with the Player and TV using HDMI .

- 1** Connect the Player to the TV using HDMI cable.
- 2** Set the input selector to HDMI on the TV.
- 3** Follow the instructions on the TV screen using remote control.



LG Sound Sync (Wireless)




For more information, download the online owner's manual. <http://www.lg.com>

Additional Information

Caution

- When you use the multiple socket, it is advisable to use 15 A socket. 10 A socket may cause power off due to lack of power supply.
- Do not place objects on the speakers. It may cause the objects to fall and make property damage.
- Install the speakers on a firm surface not to slide. The vibration caused by the strong output can shake and move the speakers.
- Avoid turning up max volume in a small enclosed space. The powerful and intense output of the speakers can shake the ceiling and get the objects in the room falling.
- To protect from hearing damage, keep the sufficient distance from the speaker. The overwhelming sound from the speaker may cause a person's hearing damage.
- Allow more than 20 cm of free space between the main set and the speakers when you install the main set on the ground. High sound pressure from the speakers can make the set tremble to disturb the CD playback.
- Connect the power cord to wall outlet directly if possible. Or when you use an extension cable, it is highly recommended to use an extension cable of 110 V / 15 A or 230 V / 15 A, otherwise the unit may not operate properly because of the lack of power supply.
- Do not overload the extension cord with excessive electrical load.

Specifications

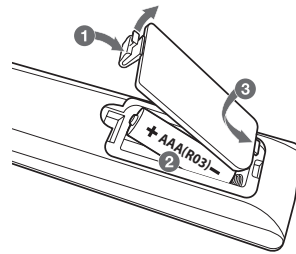
Power Requirements	Refer to the main label on the unit.
Power Consumption	Refer to the main label on the unit.
	Networked standby : 0.5 W (If all network ports are activated.)
Dimensions (W x H x D)	Approx. 450 mm x 160 mm x 355 mm
Bus Power Supply (USB)	5 V  500 mA
Amplifier (Total RMS output power)	1,100 W RMS

Design and specifications are subject to change without notice.

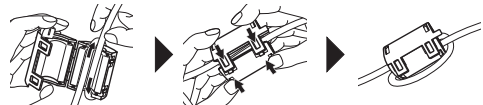
How to disconnect the wireless network connection or the wireless device

Turn off the unit by pressing the power button for more than 5 seconds.

Replacement of battery



About Ferrite Core (Optional)



Wind power cord cable around the ferrite core once.
Wind the SPEAKERS cables around the ferrite core once.

HDMI[™]
HIGH-DEFINITION MULTIMEDIA INTERFACE

Additional Information

Declaration of Conformity



Hereby, LG Electronics declares that the radio equipment type KARAOKE MINI HI-FI SYSTEM is in compliance with Directive 2014/53/EU. The full text of the EU declaration of conformity is available at the following internet address:

<http://www.lg.com/global/support/cedoc/cedoc#>

For consideration of the user, this device should be installed and operated with a minimum distance of 20 cm between the device and the body.

Frequency range	Output power (Max.)
2402 to 2480 MHz	10 dBm



Российская Федерация

Импортер ООО "ЛГ Электроникс Рус"

Адрес импортера: 143160 Российская Федерация, Московская область, Рузский район, сельское поселение Дороховское, 86 км. Минского шоссе, д.9

Адрес производителя : ЛГ Электроникс (Хужоу) Инк., завод Хатаи
516006, Китай, пров. ГуанДонг, г. Хужоу, Промышленная зона
Жонгкай, Индустриальный парк Хутай, ХуФенг Донг Уи Роуд, 13.

Сделано в Китае

Україна

Вироблено в : ЛГ Електронікс (Хужоу) Інк., завод Хатай
516006, Китай, пров. ГуанДонг, м. Хужоу, Промислова зона Жонгкай,
Індустріальний парк Хутай, ХуФенг Донг Уі Роуд, 13.

Қазақстан Республикасы

Импорттаушы АҚ "ЭЛ Джи Электроникс Алматы Қазақстан", 050061, Алматы қ., Көкорай көшесі, 2А/9

Өндірушінің мекенжайы: LG Electronics(Huizhou) Inc. Huitai Factory
516006, Қытай, ГуанДонг ауданы, Хужоу қаласы,
Жонгкай өнеркәсіптік аймағы, Хутай Индустриялық саябағы,
ХуФенг Донг Уи Роуд, 13.

Қазақстан Республикасы территориясында тұтынушылардан келіп түскен талаптар мен ұсыныстарды қарайтын және тауарды жөндеу мен техникалық қызмет көрсететін ұжым:

АҚ «Эл Джи Электроникс Алматы Қазақстан», 050061, Қазақстан Республикасы, Алматы қ., Көкорай көшесі, 2А/9. Басқа сервис орталықтары жайында мағлұматты "Тұтынушыға қызмет көрсету орталығына" телефон шалу арқылы білуге болады.

Қытайда жасалған