



SIMPLE MANUAL

LG Wi-Fi  
Sound Bar

Please read this manual carefully before operating your set and retain it for future reference.  
To view the instructions of advanced features, visit <http://www.lg.com> and then download  
Owner's Manual. Some of the content in this manual may differ from your unit.

MODEL  
SK9Y



[www.lg.com](http://www.lg.com)

Copyright © 2018 LG Electronics Inc. All Rights Reserved.

ENGLISH

FCC Compliance Statement

This equipment has been tested and found to comply with the limits for a Class B digital device, pursuant to Part 15 of the FCC Rules. These limits are designed to provide reasonable protection against harmful interference in a residential installation. This equipment generates, uses, and can radiate radio frequency energy and, if not installed and used in accordance with the instructions, may cause harmful interference to radio communications. However, there is no guarantee that interference will not occur in a particular installation. If this equipment does cause harmful interference to radio or television reception, which can be determined by turning the equipment off and on, the user is encouraged to try to correct the interference by one or more of the following measures:

- Reorient or relocate the receiving antenna.
- Increase the separation between the equipment and the receiver.
- Connect the equipment to an outlet on a circuit different from that to which the receiver is connected.
- Consult the dealer or an experienced radio/TV technician for help.

This device complies with part 15 of the FCC Rules. Operation is subject to the following two conditions:  
(1) this device may not cause harmful interference and  
(2) this device must accept any interference received, including interference that may cause undesired operation. Any changes or modifications in construction of this device which are not expressly approved by the party responsible for compliance could void the user's authority to operate the equipment.

**FCC RF Radiation Exposure Statement:** This equipment complies with FCC radiation exposure limits set forth for an uncontrolled environment. This transmitter must not be co-located or operating in conjunction with any other antenna or transmitter.

This equipment should be installed and operated with minimum distance 20 cm (7.8 inches) between the antenna and your body. Users must follow the specific operating instructions for satisfying RF exposure compliance.

FCC Radio Frequency Interference Requirements:

High power radars are allocated as primary users of the 5.25 to 5.35 GHz and 5.65 to 5.85 GHz bands. These radar stations can cause interference with and/or damage this device. This device cannot be co-located with any other transmitter.

Responsible Party:

LG Electronics USA, Inc.  
1000 Sylvan Avenue  
Englewood Cliffs, NJ 07632  
Tel: 1-800-243-0000



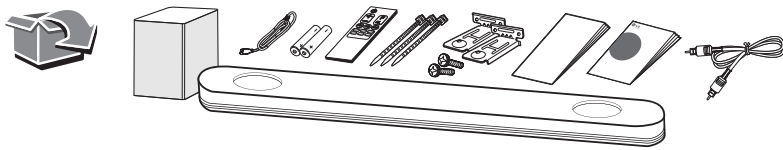
LG Customer Information Center

1-800-243-0000	USA, Consumer
1-888-865-3026	USA, Commercial

Register your product Online!

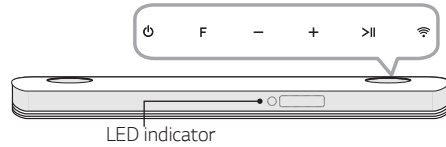
[www.lg.com](http://www.lg.com)

Printed in China



## Front Panel

The buttons are located on the rear.

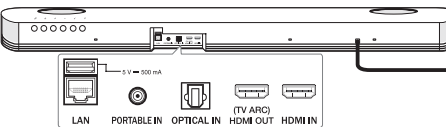


- ⏻ (Standby) ..... Switches the unit ON or OFF.
- F (Function) ..... Selects function
- /+ (Volume) ..... Adjusts volume
- >|| (Play/Pause) ..... Starts playback. / Pauses playback.
- 📶 ..... Selects Wi-Fi function.

LED indicator : Shows connection status.

- White (Blinking): Waiting for network connection on Wi-Fi function
- White (Staying on): Network connection is completed on Wi-Fi function or the other functions are selected.
- White (Dimmed): Standby mode with network connection.
- Red (Staying on): Standby mode without network connection.

## Rear Panel



- LAN ..... Connect to router.
- PORTABLE IN ..... Connect portable device.
- OPTICAL IN ..... Connect to an optical device.
- HDMI OUT (TV ARC) ..... Connect to a TV.
- HDMI IN ..... Connect to device with HDMI OUT.

## Subwoofer Connection

Place the wireless subwoofer near the sound bar and follow steps below.

- 1 Connect the power cord of the sound bar and the wireless subwoofer to the outlet.
- 2 Turn on the sound bar. :
- 3 The sound bar and wireless subwoofer will be **automatically** connected. The subwoofer's green LED turns on.

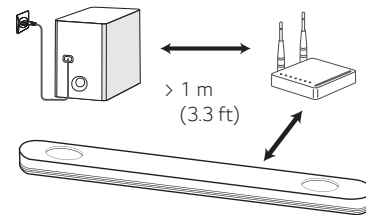
### Manually Subwoofer Connection

If the subwoofer does not make sound, try to connect manually.

- 1 Press **Pairing** button on the rear of the wireless subwoofer.
  - The green LED on the rear of the wireless subwoofer blinks quickly. (If the green LED does not blink, press and hold the Pairing button.)
- 2 Turn on the sound bar.
- 3 Pairing is completed.
  - The green LED on the rear of the wireless subwoofer turns on.



Keep the sound bar and the subwoofer away from the device (ex. wireless router, microwave oven, etc.) over 1 m (3.3 ft) to prevent wireless interference.

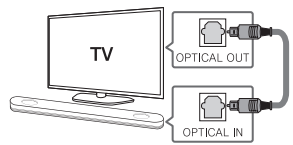


## TV Connection

Connect the sound bar and TV using Optical (A) or HDMI ARC (B).

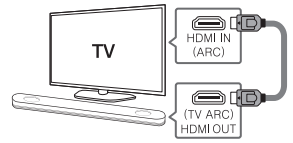
### A Optical Connection

- 1 Connect the sound bar to the TV using Optical cable.
- 2 Set up [External Speaker (Optical)] on your TV setting menu.



### B HDMI (ARC) Connection

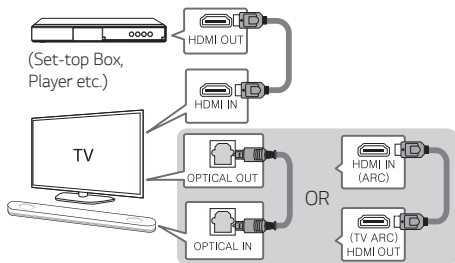
- 1 Connect the sound bar to the TV using HDMI cable.
- 2 Set up [External Speaker (HDMI ARC)] on your TV setting menu.



- HDMI connection is unavailable if your TV does not support HDMI ARC.
- If this unit is connected by OPTICAL and ARC at the same time, the ARC signal is a high priority.

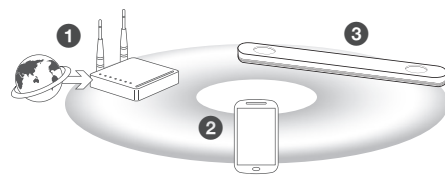
### Additional Device Connection

- 1 Connect to the external device like as follow.



- 2 Set the input source by pressing **F** on the remote control or unit repeatedly.

## Network Connection



- 1 Check network condition. A router connected to network should be installed.
- 2 Connect your smart device to your home network.
- 3 Connect the sound bar to the power supply.



All devices should be connected to same router.

### Download LG Wi-Fi Speaker Application

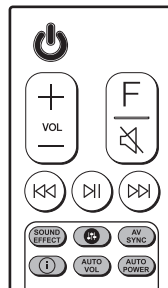
Download "LG Wi-Fi Speaker" on the App Store or Google Play Store.



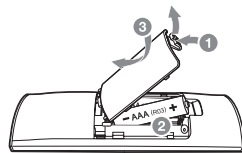
### Launch LG Wi-Fi Speaker App

Follow the steps for wired or wireless connection displayed on the screen.

## Remote control



### Replacement of Battery



**SOUND EFFECT:** Selects a sound effect mode.

**🔊:** Adjusts sound level of each speaker.

**AV SYNC:** Synchronizes the audio and video.

**📶:** Displays the input source information.

**AUTO VOL:** Adjusts too loud or low output volume level appropriately.

**AUTO POWER:** Automatically turns on by an input source.

## Additional Information

### Specification

Power requirement	Refer to the main label.
Power consumption	Refer to the main label.
Dimensions (W x H x D)	Approx. 1200.0 mm X 58.0 mm X 145.0 mm (47.2 inch x 2.3 inch x 5.7 inch)
Amplifier (Total RMS Output power)	500 W RMS

Design and specifications are subject to change without notice.



### Rear Speakers Ready

Ready for surround sound with Rear Speakers Kit sold separately. (SPK8-S)

## OPEN SOURCE SOFTWARE NOTICE INFORMATION

To obtain the source code under GPL, LGPL, MPL, and other open source licenses, that is contained in this product, please visit <http://opensource.lge.com>.

In addition to the source code, all referred license terms, warranty disclaimers and copyright notices are available for download.

LG Electronics will also provide open source code to you on CD-ROM for a charge covering the cost of performing such distribution (such as the cost of media, shipping, and handling) upon email request to [opensource@lge.com](mailto:opensource@lge.com).

This offer is valid for a period of three years after our last shipment of this product. This offer is valid to anyone in receipt of this information.

