



SIMPLE MANUAL

Wireless Sound Bar

Please read this manual carefully before operating your set and retain it for future reference.

To view the instructions of advanced features, visit <http://www.lg.com> and then download Owner's Manual.

Some of the content in this manual may differ from your unit.

MODEL

SL5R



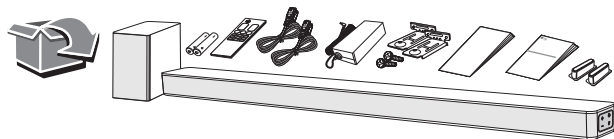
MFL71440078

1904_Rev02

ENGLISH	DEUTSCH	FRANÇAIS	NEDERLANDS	ITALIANO	ESPAÑOL	ΕΛΛΗΝΙΚΑ	PORTUGUÊS	MAGYAR
ČESKY	SLOVENČINA	POLSKI	ROMÂNĂ	LATVIEŠU	HRVATSKI	SRPSKI	БЪЛГАРСКИ	МАКЕДОНСКИ
SLOVENŠČINA	SHQIP	BOSANSKI	SVENSKA	DANSK	NORSK	SUOMI		

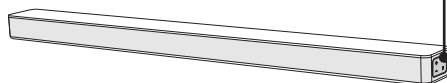
www.lg.com

Copyright © 2019 LG Electronics Inc. All Rights Reserved.



Front Panel

The buttons are located on the side.

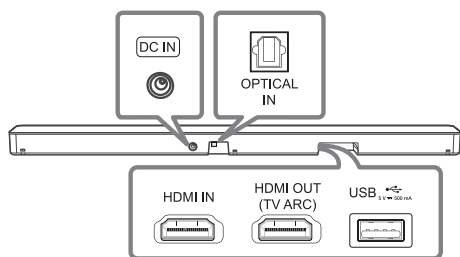


⏻ (Standby) Switches the unit ON or OFF.

F (Function) Selects function.

—/+ (Volume) Adjusts volume.

Rear Panel



DC IN Connect to the AC adapter.

OPTICAL IN Connect to an optical device.

HDMI IN Connect to device with HDMI OUT.

HDMI OUT (TV ARC) Connect to a TV.

USB Port Connect to a USB device.



If the optical cable is not connected in the correct direction, it may cause damage of optical jack.

Subwoofer Connection

Place the wireless subwoofer near the sound bar and follow steps below.

- ❶ Connect the power cord of the sound bar and the wireless subwoofer to the outlet.
- ❷ Turn on the sound bar.
 - The sound bar and wireless subwoofer will be **automatically** connected. The subwoofer's green LED turns on.

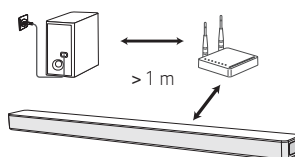
Manual Subwoofer Connection

If the subwoofer does not make sound, try to connect manually.

- ❶ Press **Pairing** on the rear of the wireless subwoofer.
 - The green LED on the rear of the wireless subwoofer blinks quickly. (If the green LED does not blink, press and hold the **Pairing**.)
- ❷ Turn on the sound bar.
 - Pairing is completed. The green LED on the rear of the wireless subwoofer turns on.



Keep the sound bar and the subwoofer away from the device (ex. wireless router, microwave oven, etc.) over 1 m to prevent wireless interference.

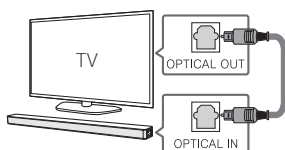


TV Connection

Connect the sound bar and TV using Optical (A) or HDMI ARC (B).

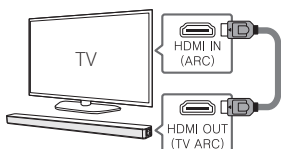
A Optical Connection

- 1 Connect the sound bar to the TV using Optical cable.
- 2 Set up [External Speaker (Optical)] on your TV setting menu.



B HDMI (ARC) Connection

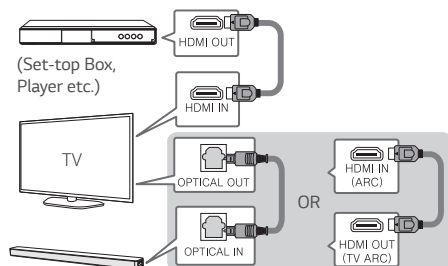
- 1 Connect the sound bar to the TV using HDMI cable.
- 2 Set up [External Speaker (HDMI ARC)] on your TV setting menu.



- HDMI connection is unavailable if your TV does not support HDMI ARC.
- If this unit is connected by OPTICAL and ARC at the same time, the ARC signal is a high priority.

Additional Device Connection

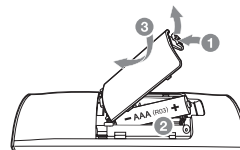
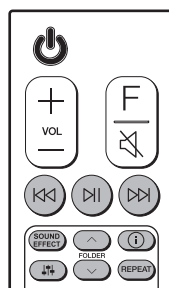
- 1 Connect to the external device like as follow.



- 2 Set the input source by pressing **F** repeatedly.

Remote control

Replacement of Battery



⏮/⏭: Skip/Search

⏸: Play/Pause

- **Bluetooth connection lock (BT LOCK):** Select the **Bluetooth** function by pressing **F** repeatedly. Long press **⏸** and press it again to limit Bluetooth connection to only BT and LG TV.

SOUND EFFECT: Selects a sound effect mode.

- **TV remote:** Long press **SOUND EFFECT** and press it again to use TV remote control.

FOLDER ^/∨: Searches a folder.

i: Displays the information of a file, an input source or connected **Bluetooth** device name.

- **Auto Power ON/OFF:** Long press **i** and press it again.

⬆/⬆: Adjusts sound level of each speaker.

- **Surround sound:** Long press **⬆/⬆** and press it again.

REPEAT: Listens to your files repeatedly or randomly.

Additional Information

Specification

Power consumption	Refer to the main label.
	Networked standby : 1.1 W (If all network ports are activated.)
AC adapter	<ul style="list-style-type: none"> Model : DA-50F25 Manufacturer : Asian Power Devices Inc. Input : 100 - 240 V ~ 50 - 60 Hz Output : 25 V $\overline{\text{---}}$ 2 A
Dimensions (W x H x D)	Approx. 890.0 mm X 57.0 mm X 85.0 mm With foot
Bus Power Supply (USB)	5 V $\overline{\text{---}}$ 500 mA
Amplifier (Total RMS Output power)	520 W RMS

Design and specifications are subject to change without notice.



Rear Surround sound

Wireless Rear Speakers Kit included for real surround sound. (SPJ4-S)

How to disconnect the wireless network connection or the wireless device

Set up the AUTO POWER ON/OFF function to off and turn off the unit.

OPEN SOURCE SOFTWARE NOTICE INFORMATION

To obtain the source code under GPL, LGPL, MPL, and other open source licenses, that is contained in this product, please visit <http://opensource.lge.com>.

In addition to the source code, all referred license terms, warranty disclaimers and copyright notices are available for download.

LG Electronics will also provide open source code to you on CD-ROM for a charge covering the cost of performing such distribution (such as the cost of media, shipping, and handling) upon email request to opensource@lge.com.

This offer is valid for a period of three years after our last shipment of this product. This offer is valid to anyone in receipt of this information.

Declaration of Conformity



Hereby, LG Electronics declares that the radio equipment type Wireless Sound Bar is in compliance with Directive 2014/53/EU. The full text of the EU declaration of conformity is available at the following internet address:

<http://www.lg.com/global/support/cedoc/cedoc#>

For consideration of the user, this device should be installed and operated with a minimum distance of 20 cm between the device and the body.

Frequency range	Output power (Max.)
2402 to 2480 MHz	10 dBm
5730 to 5821 MHz	13 dBm



SIMPLE MANUAL

Wireless Rear Speakers Kit

Please read this manual carefully before operating your set and retain it for future reference.

To view the instructions of advanced features, visit <http://www.lg.com> and then download Owner's Manual. Some of the content in this manual may differ from your unit.

MODEL

SPJ4-S



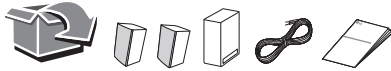
MFL71440018

1901_Rev01

www.lg.com

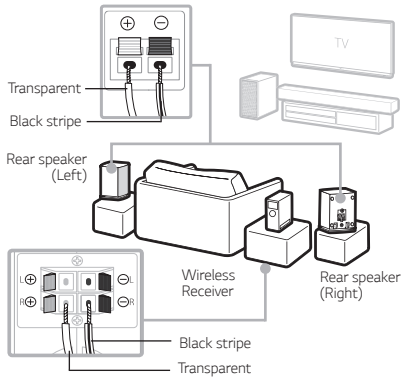
Copyright © 2019 LG Electronics Inc. All Rights Reserved.

ENGLISH	DEUTSCH	FRANÇAIS	NEDERLANDS	ITALIANO	ESPAÑOL	ΕΛΛΗΝΙΚΑ	PORTUGUÊS	MAGYAR
ČESKY	SLOVENČINA	POLSKI	ROMÂNĂ	LATVIEŠU	HRVATSKI	SRPSKI	БЪЛГАРСКИ	МАКЕДОНСКИ
SLOVENŠČINA	SHQIP	BOSANSKI	SVENSKA	DANSK	NORSK	SUOMI		



1 Rear Speakers Connection

! Speaker design and connection method may be different according to models.



- 1 Connect the speaker cables to rear speakers correctly.
- 2 Connect the Wireless Receiver and the rear speakers (Grey: right, Blue: left) with the speaker cables.
- 3 Turn on the Surround function to enjoy surround sound.

2 Wireless Receiver Connection

- 1 Connect the power cord of wireless receiver to the outlet.
- 2 Turn on the unit: The unit and wireless receiver will be **automatically** connected. The receiver's yellow - green LED turns on.

Wireless Receiver Connection Manually



If the rear speakers do not make sound, try to connect manually.



- 1 Press **PAIRING** button on the rear of the wireless receiver.
 - The yellow - green LED on the wireless receiver blinks quickly.
- 2 Turn on the main unit.
- 3 Pairing is completed.
 - The yellow - green LED on the wireless receiver turns on.

Surround Sound On/Off

When you turn on surround function, you can enjoy magnificent surround sound for all the input sound source with rear speakers.

!
The initial setting for the surround function is OFF, turn the surround function ON to use it.

Surround On: Press and hold  button on the remote control about 3 seconds and then press  button repeatedly to select ON - SURROUND in the display window.

Surround Off: Press and hold  button on the remote control about 3 seconds and then press  button repeatedly to select OFF - SURROUND in the display window.

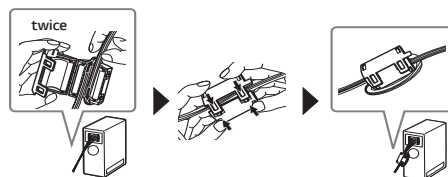
Additional Information

Specification of Wireless receiver

Power requirement	Refer to the main label on the wireless receiver.
Power consumption	Refer to the main label on the wireless receiver.
Dimensions (W x H x D)	Approx. 60 mm x 220 mm x 175 mm

Design and specifications are subject to change without notice.

About Ferrite Core (Optional)



Declaration of Conformity



Hereby, LG Electronics declares that the radio equipment type RECEIVER is in compliance with Directive 2014/53/EU. The full text of the EU declaration of conformity is available at the following internet address:

<http://www.lg.com/global/support/cedoc/cedoc#>

For consideration of the user, this device should be installed and operated with a minimum distance of 20 cm between the device and the body.

Frequency range	Output power (Max.)
5730 to 5821 MHz	13 dBm

